

# Bedeker PRAGUE

restaurant guide

city guide

4.  
2014  
FREE



***Everything You Always Wanted  
to Know About Prague\****

***(\*But Were Afraid to Ask)***



Restaurants Cafés Hotels Culture Nightlife

# Grévin

THE ART OF MAKE-BELIEVE



## THE LARGEST WAX MUSEUM IN CENTRAL EUROPE

- Book online and get the best price!
- Come to Grévin and make your selfie!
- Party with the stars!

# Grévin

THE ART OF MAKE-BELIEVE



CELETNÁ 15  
PRAGUE 1





# contents

**8**

## facts & info

arriving, public transportations,  
history & the famous sites

**18**

## culture & events

The most popular exhibitions,  
concerts and shows

Interview with Kevin Costner

**30**

## service

Buy the ticket, rent a car or call  
nearest health emergency

**42**

## gastro

Prague's bests restaurants and  
cafés Beer Tips

**56**

## nightlife

Prague by night



# Galerie hlavního města Prahy City Gallery Prague

Jedinečná příležitost poprvé v historii zhlédnout  
unikátní prostory Colloredo- Mansfeldského paláce

For the first time in history, a unique chance to visit  
the original interiors of Colloredo-Mansfeld Palace

**Palác Colloredo-Mansfeld**  
**Colloredo-Mansfeld Palace**  
**Karlova 189/2, 110 00 Praha 1**

**Otevřeno denně kromě pondělí 10-16 h**  
**Open daily except Mondays 10 a.m.-4 p.m.**

ghmp

PRAHA  
GALERIE  
PRAHA  
PRAHA

COLLOREDO  
MANSFELD



[www.ghmp.cz](http://www.ghmp.cz)



**bpmedia**

**Disk Data s.r.o.**  
**Sokolovská 44, Praha 8**  
**[www.pragmoon.cz](http://www.pragmoon.cz)**

**EDITORIAL:**  
general editor: Tomáš Chvála  
editor: Milada Hrušková  
translation: Vo Anh Tuan

**DESIGN & LAYOUT:**  
Disk Data s.r.o.

**SHOP ENSURES:**  
Disk Data s.r.o.

**ADVERTISEMENT ORDER:**  
Ivana Dufková  
[dufkova@diskdata.cz](mailto:dufkova@diskdata.cz)

Roman Sobota  
[sobota@diskdata.cz](mailto:sobota@diskdata.cz)

**DISTRIBUTION:**  
**GRAND PRINC MEDIA, a.s.**  
**DISK DATA S.R.O.**

**COVER PHOTO:**  
[www.czechtourism.cz](http://www.czechtourism.cz)

Free distribution on selected places  
four times per year

Issue 4/2014 published: 12.11.2014

Registration: MK ČR E 19383

## Indoor Go-Kart arena

PKA - Prague karting arena's raceway at Letnany, North Prague, is an excellent venue for individual drivers, private groups and corporate events. With its superb racing facilities and catering services, state-of-the-art race computer systems, multilevel track with 15 meters long bridge and fleet of expertly prepared karts, you can be assured of the thrills of wheel to wheel action that Karting in PKA provides.

PKA is widely recognised as the founder of modern go kart racing for teenagers & adults in Prague and have been at the forefront of indoor go Karting since 1999, developing the sport into one of the most exciting and accessible forms of motor racing today.

Indoor go Karting is not only a thrilling experience, but also great fun, and whether you are a novice or a potential Formula 1 driver, you will find that PKA's fast and furious go Karting race sessions are geared up to give you an adrenalin-filled event to remember!

The track is open all the year from Monday to Friday from 14.00 to midnight and from 10.00 am until midnight on Saturdays and Sundays.

They can be found on crossroads of Toužimská and Ašská street in Prague 9 - Letnany. You can use bus number: 158 from terminal station of Metro (underground) line "C" to station "Stare Letnany" it takes four minutes.

For reservations  
call: +420 777 311 856  
or visit [www.praguekartingarena.com](http://www.praguekartingarena.com)

## PRAGUE KARTING ARENA



# GO-KART

**INDOOR ARENA**

**Thrilling 600 meters long track with breathtaking 15 meters long bridge with special asphalt concrete illuminated with power LED technology.**

**12 fast Subaru 7hp go karts with computerized scoring system.**

**100 seats in bar-restaurant with the whole track view.**

**Easily accessed from the City centre by subway line „C”.**

**Special prices for stag and hen party groups !**

**Call +420 777 311 856 for reservation !**



# → WELCOME TO PRAGUE!



Welcome to Prague! Whether you've just landed, arrived by train, bus or car, we've got the allimportant low down on how to reach the city center using all the possible means of transportation, whether on a tight budget or otherwise.

## ↓ 1. ARRIVING IN PRAGUE BY PLANE

The airport is located on the northwest edge of Prague, some 20km (12 miles) from the city center. Although Prague boasts other, smaller airports, all international flights operate through Ruzyně. Important related phone numbers include +420 220 113 314 (general info), +420 220 116 072 (baggage claim) and +420 220 114 283 (lost & found).

### ↓ GETTING TO THE CITY CENTRE

If you've just arrived at the airport, getting downtown is generally, depending on the traffic, a matter of some 20 to 30 minutes (if you make use of a taxi or a shuttle service; see below), or 50 minutes if you use the cheaper yet convenient and comfortable public transportation.



Добро пожаловать в Прагу! Если вы только что приземлились, прибыли на поезде, автобусе или автомобиле, у нас есть все важные данные о том, как добраться до центра города, используя все возможные виды транспорта в зависимости от ваших средств.

## ↓ 1. ПРИБИТИЕ В ПРАГУ НА САМОЛЕТЕ

Аэропорт расположен на северозападной окраине Праги, приблизительно в 20 км от центра города. Хотя Прага может похвастаться другими, меньшими аэропортами, все международные рейсы осуществляются через аэропорт Рузине. Необходимыми телефонными номерами являются +420 220 113 314 (общая информация), +420 220 116 072 (багаж) и +420 220 114 283 (стол находок).

### ↓ КАК ДОБРАТЬСЯ ДО ЦЕНТРА ГОРОДА

Если вы только что прибыли в аэропорт, возможность добраться до центра города, как правило зависит от транспорта. Интервалы составляют от 20 до 30 минут (в том случае, если вы пользуетесь такси



# KUBISTA

- Tradition, history, unique crafts, quality, inspiration
- Kubista, your guide to applied Czech arts of the beginning of the modern era of the 20th century
- The originals, replicas and unique pieces inspired by the classic design by the Bohemian period of Cubism
- A wide selection of exclusive porcelain, ceramics, glass, textiles, jewelries, books, furniture
- You can find it in the heart of the historical center of the capital, on the ground floor of the famous Dům U Černé Matky Boží

Dům U Černé Matky Boží / Ovocný trh 19/110 00 Praha 1  
kubista@kubista.cz, www.kubista.cz, +420 224 236 378  
Mon - closed, Tue-Sat 10,00 - 19,00, Sun 12,00 - 19,00



# FUTURISTA

- A unique space dedicated to the most fresh and continuously updated selection of the best of Czech design, jewelry and architecture
- In the historical center of Prague across the Bethlehem Chapel
- A wide selection of literature, magazines, porcelain and glass from leading Czech artists
- The quality, uniqueness - a collection of unique pieces made exclusively for the brand Futurista

Betlémské náměstí 5a/110 00 Praha 1  
futurista@futurista.cz www.futurista.cz  
+420 725 128 660  
Mon - Sat SO 11.00 to 19.00 , Sunday - closed



FUTURISTAUNIVERSUM

## FACTS &amp; INFO

↓...BY PUBLIC  
TRANSPORTATION

Bus presents the cheapest way of reaching city center. It links the airport with the terminus of one of Prague's three subway lines. The drawback may be the fact that you need to buy a bus ticket, for which you'll need Czech crowns. Use the ATMs in the arrivals hall to get Czech crowns, rather than changing money at the overpriced exchange offices. You can either buy your ticket from the kiosk or the transport information desk in both arrival halls (open 7AM – 10PM), from the coin vending machines located right at the bus stop platform, or directly from the driver, although this will cost a couple extra crowns. The ticket price is 26 Czech crowns (1EUR / 1.3USD) for

transfer ticket that remains valid for the follow-up subway ride, or for a total of 75 minutes, plus an extra 13 crowns for larger pieces of luggage.

## BUS # 119

This will probably be most people's choice as the 119 provides the quickest connection to the historical center. Depending on the time of day, it runs every 7 to 20 minutes and gets you to the A line of Prague's subway. Hop on, remember to validate your ticket, and don't get off until the final stop (Dejvická). The subway entrance is just next to where you get off. The bus runs from 4:18AM until around 12:10 AM at night.

## BUS # 100

The 100 bus links the airport with the B-line of the Prague subway. Just get off at Zličín, the final stop. The 100 runs every 15 minutes throughout the day and every half hour after 7PM. The ride takes 15 minutes, but expect another 20 minutes

или трансфером, см. ниже), или 50 минут, если вы пользуетесь более дешевым и удобным общественным транспортом.

↓... НА ОБЩЕСТВЕННОМ  
ТРАНСПОРТЕ

Автобус представляет самый дешевый способ как добраться до центра Праги. Он связывает аэропорт с терминалом одной из трех линий пражского метро. Недостатком является то, что вам будут нужны чешские кроны, чтобы купить билет на автобус. Пользуйтесь банкоматами в зале прибытия, чтобы получить чешские кроны, а не менять деньги в обменных пунктах по повышенной цене.

Вы можете купить билет в киоске или в информационном бюро в обоих залах прибытия (работает с 7 утра до 10 вечера), из монетных автоматов, расположенных на автобусной остановке, или прямо у водителя, хотя это будет стоить пару дополнительных крон.

Цена билета с пересадкой составляет 26 чешских крон (1EUR / 1.3USD). Он остается в силе для следующей поездки метро - в общей сложности действителен в течение 75 минут. Для багажа больших размеров вы заплатите следующих 13 крон. Обратите внимание на то, что торговые автоматы и шоферы не принимают иностранную валюту. Автобус удобный, чистый и безопасный способ сообщения с центром Праги для тех, кто хочет экономить. Однако, автобус может быть довольно переполненным в часе пик!

## АВТОБУС № 119

Вероятно, большинство людей выберет автобус № 119, который обеспечивает быструю связь с историческим центром. В зависимости от времени суток, он ездит каждые 7 - 20 минут и соединяет пассажиров с линией пражского метро. Садитесь на автобус и не забудьте закомпостировать свой билет. Поезжайте до конечной станции метро

**Regular concerts in the  
Spanish Synagogue  
4 times a week from 5:30 p.m.**

**Selection of Mozart's Operas  
in the Estates theatre in project  
Mozartissimo**

## Bolero

The best of czech and world music

The best of Gershwin

Jewish mystical melodies

## Mozartissimo

30. December at 5:00 p.m.

1. January

New Years koncert at 7:00 p.m.



Spanish Synagogue



Estates Theatre

[www.bmart.cz](http://www.bmart.cz)



## TWO FLOORS OF EXPERIENCE

*Два этажа истории  
чешского пива*

## CZECH BEER HISTORY AND BREWING TRADITION IN ONE SPOT

*История и традиции  
Чешского пивоварения  
отрасли в одном месте*

## BEER TASTING INCLUDED

*Дегустация пива –  
входит в цену билета*

## HISTORICAL CELLAR

*Исторические погребы*

+420 778 072 337

[www.beermuseum.cz](http://www.beermuseum.cz)

HUSOVA 7 PRAHA 1



**THE BIGGEST BEER  
EXHIBITION IN PRAGUE.**



**FACTS & INFO**

of subway ride if you're aiming to reach the city center afterwards by metro. The bus runs from 5:30AM until around 11:50 PM.

**AIRPORT EXPRESS BUS**

The Airport Express bus service links the airport with the Hlavní nadrazi train station; it runs every half hour and the ride takes 40 minutes. Although part of Prague's public transportation system, special fares apply: tickets can be purchased solely from the driver and run for 50 crowns (with no extra luggage fees). The AE runs from from 5:00AM to 10:00PM.

**TRAVELLING AT NIGHT**

If you want to use the public transportation at night, look out for the # 510 bus, operating between midnight and 3.30AM and linking the airport with the tram at Divoka Sarka. From there, take the tram # 51 to the city center. Note that the night bus runs every 30 minutes.

**↓...BY SHUTTLE**

Various companies run shuttle door-to-door services, or drop you off at the city center. They are generally priced lower compared to taxis, and can be easily found outside the terminals. The CEDAZ minibus shuttles run every half hour and costs 120 crowns per person, dropping you off at the city center. The service operates between 5:30AM and 9:30PM. CEDAZ will also drive you directly to any given address, but you need to pre-book (call +420 220 116 758 or go to [www.cedaz.cz](http://www.cedaz.cz)). Other shuttle services include Prague Airport Transfers who accept credit cards ([www.prague-airport-transfers.com](http://www.prague-airport-transfers.com)).

Дейвица. Вход в метро находится рядом с местом, где вы будете выходить из автобуса. Автобус курсирует с 4ч. 18мин. утра примерно до 00 ч. 10 мин.

**АВТОБУС № 100**

Автобус № 100 соединяет аэропорт с линией Б пражского метро. Выйдите на конечной остановке Зличин. Автобус № 100 ходит каждые 15 минут в течение дня и каждые полчаса после 7 часов вечера. Поездка продолжается 15 минут, но вас ждет еще 20 минут езды на метро, если вы на нем собираетесь добираться до центра города. Автобус курсирует с 5ч. 30мин. утра примерно до 23ч.50мин. ночи.

**АВТОБУС AIRPORT EXPRESS**

Автобус Airport Express (AE) связывает аэропорт с Главным вокзалом (Hlavní nadrazi). Он ездит каждые полчаса, и поездка длится 40 минут. Хотя AE является частью системы общественного транспорта Праги, здесь применяются специальные тарифы: билеты можно приобрести только у водителя и в цене 50 крон (без дополнительной оплаты за багаж). AE ездит с 5ч. утра до 10ч. вечера.

**НОЧНЫЕ РЕЙСЫ**

Если вы хотите использовать общественный транспорт в ночное время, обратите внимание на автобус № 510, который ездит между полночью и 3ч. 30мин. утра и связывает аэропорт с трамваем на остановке Дивока Шарка (Divoka Sarka). Оттуда добирайтесь на трамвае № 51 до центра города. Обратите внимание - ночной автобус ходит каждые 30 минут.

**↓..НА МАРШРУТНОМ ТАКСИ**

Различные компании используют челночное сообщение „от двери до двери ... или высаживают вас в центре города. Их цены, как правило, ниже, чем в такси, и такой тип такси можно легко найти за пределами терминалов. Челночные микроавтобусы CEDAZ ходят каждые полчаса, и проезд в центр города стоит 120 крон на человека. Микроавтобус курсирует с 5ч.30мин. утра до 9ч.30мин. вечера. CE-



## ↓...BY TAXI

Prague taxi drivers are notorious for overcharging tourists. Generally, you should be on the safe side with the fleet of AAA-labelled taxis waiting in front of the terminal. The ride will cost around 500 – 700 crowns. Don't shy away from contacting a competing company, but make sure to always check the price beforehand, whatever company you've chosen! You shouldn't ever have to pay over 900 crowns.

DAZ вас также отвезет по любому заранее заказанному адресу (+420 211 111 111 или посетите [www.cedaz.cz](http://www.cedaz.cz)). Другие услуги включают трансфер из Аэропорта Прага, где принимают кредитные карты ([www.prague-aeroport-transfers.com](http://www.prague-aeroport-transfers.com)).

## ↓... НА ТАКСИ

Пражские таксисты известны своим обчитыванием туристов. Поэтому на всякий случай пользуйтесь такси с надписью AAA, ожидающих перед терминалом. Поездка будет стоить около 500 - 700 крон. Не бойтесь воспользоваться услугами конкурирующих компаний, но заранее убедитесь в цене. Независимо от компании, которую вы выбрали, вы никогда не должны платить более 900 крон.



## ↓2. ARRIVING IN PRAGUE BY TRAIN

International trains arrive at the central station, Hlavní nádraží, often referred to as Praha hl.n. The station is directly connected with Prague's subway system and located right in the city centre. If arriving after dark, we highly recommend hopping on the subway (remember to buy a ticket) rather than walking out and through the surrounding park. Most of the station itself has just been refurbished and boasts a modern look with plenty of kiosks, drug stores and fast-food joints.

## ↓2. ПРИЕЗД В ПРАГУ НА ПОЕЗДЕ

Международные поезда прибывают на центральную станцию, Hlavní nádraží, часто называемую Praha hl.n. Станция непосредственно связана с пражским метро и расположена в самом центре города. Если вы прибываете после наступления темноты, мы настоятельно рекомендуем вам ехать на метро (не забудьте купить билет) и не проходить через окружающий парк. Большая часть самой станции только что была отремонтирована и может похвастаться современным видом с множеством киосков, аптек и ресторанов быстрого питания.

### 3. ARRIVING IN PRAGUE BY BUS

Florenc is the central bus station; located in the city centre, it is also directly adjacent to Prague subway's station Florenc (a transfer station between the lines C and B). Like the central train station, Florenc has recently undergone a major facelift and now boasts a pleasant and clean arrivals & departures hall with kiosks and fast-foods (Burger King, anyone?), and most importantly a big screen showing the bus times and the respective platforms.

### 3. Приезд в Прагу на автобусе

Флоренц не только является центральной автобусной станцией, расположенной в центре города, но и в непосредственной близости от пражской станции метро Флоренц (переход между линиями С и В). Как и центральный железнодорожный вокзал, станция Флоренц недавно подверглась значительной реконструкции и теперь может похвастаться приятным и чистым залом приездов и отъездов с киосками и ресторанами фаст-фуд (желаете Burger King?), а самое главное - большим экраном с отъездами и приездами автобусов и с указанием соответствующих платформ.



### 4. ARRIVING IN PRAGUE BY CAR

Prague falls victim to traffic jams and a lack of legal parking spaces (streets with blue-marked areas on the side are reserved for residents and you run the risk of having your car towed if you park there). This is why we recommend using the so-called P+R's (park and ride) parking places, situated near all highways. Find more info at [www.dpp.cz/en/parking](http://www.dpp.cz/en/parking).

### 4. Приезд в Прагу на автомобиле

Прага становится жертвой пробок и недостатком законных парковочных мест. Улицы с полосой синего цвета на стороне означают области зарезервированные для жителей. В этом случае вы рискуете, что ваш автомобиль будет отбуксирован при паркинге. Именно поэтому мы рекомендуем использовать так называемые стоянки парк анд райд (P + R) - парковочные места, расположенные вблизи всех магистралей. Более подробную информацию найдете на [www.dpp.cz/en/parking](http://www.dpp.cz/en/parking).

## PRAGUE'S PUBLIC TRANSPORTATION SYSTEM

Prague's public transportation system is generally reasonably clean, very efficient, runs on time, and its network spans the whole city; with the price of 32 CZK for a transfer ticket (1EUR / 1.3USD), it cannot be beat. If you don't need to venture out of the center, you can confine to using the subway (or metro, as it's called here) and trams; buses service the further-away neighbourhoods. Let's look more closely at the various tickets you can purchase.

Tickets can be bought from the numerous vending machines in all the metro stations and at many tram stops (always keep coins at hand), or from most tobacco stores / kiosks.

**24-hour pass:** 110 CZK  
**3-day pass:** (72 hours): 310 CZK

### ONE-OFF TICKETS

30 min. / 5 stops / no transfer ticket: 24 CZK, 90 min. transfer ticket: 32 CZK

Remember to validate your ticket upon first entering the metro / boarding a tram or bus. (i.e. slip the ticket into one of the yellow boxes and wait for the info to be stamped on it).

For more information about Prague Public transport visit [www.dpp.cz](http://www.dpp.cz) or call the free info line 296 191 817.

## СИСТЕМА ОБЩЕСТВЕННОГО ТРАНСПОРТА В ПРАГЕ

Общественный транспорт в Праге, как правило, достаточно чистый, очень эффективный и точный. Его сеть охватывает весь город. Цена билета 32 крон за поездку с пересадкой (1EUR / 1.3USD) очень выгодна. Если вам не надо выходить из центра, вы можете ограничиться метро и трамваями. Автобусы следуют в окрестности города. Давайте более внимательно рассмотрим различные

типы билетов, которые можно приобрести. Билеты можно приобрести в многочисленных торговых автоматах на всех станциях метро и на многих трамвайных остановках (всегда имейте при себе монеты), или в большинстве табачных магазинов или киосков.

**Суточный билет (24 часа):** 110 крон  
**Трехдневный билет(72 часа):** 310 крон

### РАЗОВЫЕ БИЛЕТЫ

30 минут / 5 остановок / без пересадки: 24 крон  
90 минут /с пересадкой: 32 крон

Не забудьте закомпостировать свой билет при первом входе в метро, в трамвай или в автобус. (т.е. вложите билет в одну из желтых коробок и подождите пока билет не будет закомпостирован). Для получения дополнительной информации о пражском общественном транспорте посетите [www.dpp.cz](http://www.dpp.cz) или информорируйтесь по телефону на бесплатной линии 296 191 817.

ANTIQUE  
U UHELNEHO TRHU

CZECHOSLOVAKIA GSSR PROOF COMMEMORATIVE AND ANNUAL COINS

Skořepka 8, 110 00 Prague 1, Czech Republic  
tel: +420 224 234 696  
opening hours: Mo - Sa 10:00 - 18:00  
[www.numismatik-mince.cz](http://www.numismatik-mince.cz)

## FACTS &amp; INFO

For over 1000 years, Prague has served as the political, cultural and economic centre of the Czech state. Having been the seat of two Holy Roman Emperors during the gothic and renaissance periods, it also had the status of the Holy Roman Empire capital. Prague's history commenced in the year 870, although evidence shows the area had been inhabited since the Stone Age. The city flourished during the 14th century, under the reign of King Charles IV, who, among other deeds, ordered the building of the famous Charles Bridge or Saint Vitus Cathedral, the oldest gothic cathedral in central Europe, and Charles University, the oldest university in central Europe. Prague was then the third-largest city in Europe. Now home to some 1.2 million inhabitants, Prague became the capital of the newly set up Czechoslovakia in 1918, with the end of WW I and the dissolution of the Austro-Hungarian Empire. In 1992, Prague's historic center became a UNESCO world heritage site, and is currently one of the world's most popular tourist destinations.

На протяжении более 1000 лет, Прага служит политическим, культурным и экономическим центром чешского государства. Она была пристольным городом двух императоров Священной Римской империи в готическом периоде и в эпохе Возрождения. Прага также имела статус столицы Священной Римской империи. История Праги началась в 870г., хотя есть сведения о том, что область была населена с периода каменного века. Город процветал в течение 14-го века, во времена правления короля Карла IV, который, наряду с другими проектами, приказал построить знаменитый Карлов мост, кафедральный готический собор Святого Вита, и Карлов университет - старейшие постройки в Центральной Европе. В то время Прага была третьим по величине городом Европы. Сейчас здесь проживает около 1,2 млн. человек. После окончания Первой мировой войны и распада Австро-Венгерской империи в 1918 году Прага стала столицей вновь созданной Чехословакии. В 1992 году исторический центр Праги стал принадлежать к Всемирному наследию ЮНЕСКО, и в настоящее время является одним из самых популярных туристических мест в мире.





# FARCRY 4



PS4

## WE WERE THERE

**E**very generation experiences something that belongs only to it. In the culture its effect is doubled. Although thanks to the digital carriers it doesn't die, Blu-ray won't be equal to the cinema experience and the very best musical assembly substitute concert. Be there – that's the basis of immortality. And December is definitely one of those chapters.

The last Hobbit movie is entering the cinema screens. Sure, we could feel something similar at the last Lord of the Rings. The chance that Peter Jackson would ever return to Middle Earth is very small this time (the official main stories were all used). The third Hobbit is therefore an important milestone of cinematography, where viewers will be able to appreciate Tolkien's masterpiece in Jackson's stunning direction. What can we say, he really found himself in this work.

Naturally, all the other cultural tips are unique. So enjoy them as well, so that you can tell about them sometime.

*th.*



## ONE REPUBLIC

O2 arena, Prague 9  
Price: from 990 Kč  
14.11.2014

More and more popular American band OneRepublic, which recently scores with each of their new single, had released an excellent and great selling album "Na-

tive" last year. Four great singles were released into the radio ether from this CD plate and dominated the top radio charts. They also scored very well in the worldwide sales charts. OneRepublic based on the successful and sold-out tour that included a sold out concert in Prague are returning to the Czech Republic to present the songs from their last album and their greatest hits.



## HOLLYWOOD UNDEAD

Lucerna, Prague 1  
Price: from 690 Kč  
18.11.2014

Great news for hard rock guitar fans – Legendary American rap-rock band Hollywood Undead is heading to the Czech Republic this November! The band, whose members perform in masks resembling hockey jerseys and communicate only in nicknames, will visit Prague during their world tour. Because of the great interest of fans



the concert of American Hollywood Undead even moved into the Great Hall in Lucerna. Don't hesitate with your ticket purchase. "We are delighted that the first Czech Hollywood Undead concert in the Czech Republic met with such an enthusiastic response." Said the representative of organizer Fource Entertainment.



Katniss is experiencing the most difficult period of her time. Although she escaped the last Games unharmed and her mother and sister are safe, her worries are not over yet. Capitol destroyed the District 12 and Katniss is haunted by guilty feelings. In addition, Peeta, her partner from the Games, remained

## HUNGER GAMES

Sci-fi / Adventure, USA, 2014  
Director: Francis Lawrence  
Stars: Jennifer Lawrence, Josh Hutcherson, Liam Hemsworth, P. S. Hoffman  
Release date: 20.11.2014

in the hands of the enemy. District 13 is in the front of the resistance, although there weren't much to know about its existence until now. War brings casualties on both sides and you can't miss it. Just for the case, that it's one of the last movies that actor Philip Seymour Hoffman completed before his untimely death.

## PATRICE

Lucerna Music Bar, Prague 1  
Price: 490 Kč  
24.11.2014

Big event for all fans of relaxing and original music. Representative of the excellent mix of reggae, neo-soul, jazz, R&B, hip-hop, funk and folk, musician Patrice will be soon introduced to Prague audience at the Lucerna Music Bar! Patrice Babatunde Bart-Williams or simply Patrice is the son of Sierra Leonean father and German mother and is considered as one of the most interesting artists in Germany. Bob Mar-



ley and Bob Dylan can't be denied in the Patrice's creations – he's listened to them since his childhood. He has eight studio albums now.

# THE TENORS

O2 arena, Prague 9  
Price: from 950 Kč  
26.11.2014

The group of four Canadian tenors The tenors will visit the Czech Republic for the second time. This group consists of four sympathetic, charismatic and talented singers who have had hundreds of successful performances around the world. They are masters of different vocal styles, making an exciting blend of classical music but also modern pop. They have also platinum plates,



worldwide performances and many international awards. Each of the four singers has a unique style and voice tone and form an extraordinary group whose teamwork is really something special.

# THE PENGUINS OF MADAGASCAR

Animation / Comedy, USA, 2014  
Director: Eric Darnell, Simon J. Smith  
Release date: 27.11.2014

In recent years there occur a phenomenon of entertaining side characters in animated movies, who steal the whole movies for themselves. Ice Age had desperate chipmunk Scrat, Despicable Me has the minions with extremely contagious laugh and Madagascar was enliven up by penguin squad, for whom there isn't anything like "Mission: Impossible". These guys can deal with any situation including the full-length format, where they will play the main role. While it originally appeared that we would be able to see the movie next year, the creators finally targeted this November. So make time to see them!



# HORIBLE BOSSES 2

Comedy, USA, 2014  
Director: Sean Anders  
Stars: Jason Bateman, Charlie Day,  
Jason Sudeikis, Chris Pine  
Release date: 27.11.2014



Three idiots, who unsuccessfully attempted to kill their bosses, return! And again Nick, Dale and Kurt have had enough of the eternal confessions to their superiors. So in the movie Horrible Bosses 2 they decide to start a business on their own and be their own bosses. But a canny investor will cheat on them. Betrayed, desperate and without a single chance of reaching the justice by legal means all three of "entrepreneurs" creates a foolish plan to kidnap the investor's adult son, for whose ransom they want to regain the control of their company. Also starring Chris Pine, Jamie Foxx and damn sexy Jennifer Aniston.





# A PASSIONATA

MAGICKÁ SETKÁNÍ

*Zlatá cesta*



13. - 14. 12. 2014 PRAHA O<sub>2</sub> arena

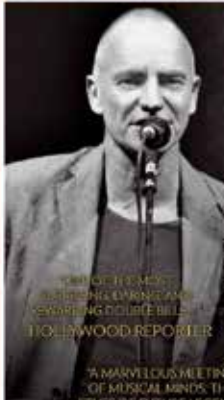


Vstupenky ve sběrnách ve sběrnách SAZKA sázková kancelář, a.s., [www.sazkaticket.cz](http://www.sazkaticket.cz)



LIVE NATION

[www.apassionata.cz](http://www.apassionata.cz)



"ONE OF THE MOST  
INSPIRING AND  
REWARDING DOUBLE BILLS"  
- HOLLYWOOD REPORTER

"A MARVELLOUS MEETING  
OF MUSICAL MINDS: THE  
STUFF OF FUTURE LEGEND."

- ORANGE COUNTY REGISTER

STING & PAUL SIMON & STING & PAUL SIMON  
ON STAGE TOGETHER  
TOUR 2015



"GREAT BLENDING OF MUSIC BY  
TWO OF THE WORLD'S FINEST  
SONGWRITERS AND SINGERS."

- AMERICAN SONGWRITER

14. 3. 2015 PRAHA O<sub>2</sub> arena



VSTUPENKY: [ticketsportal.com](http://ticketsportal.com)

[SIMONANDSTINGTOUR.COM](http://SIMONANDSTINGTOUR.COM)  
[PAULSIMON.COM](http://PAULSIMON.COM)  
[STING.COM](http://STING.COM)

LIVENATION.cz



## OUIJA

Horror, USA, 2014

Director: Stiles White

Stars: Olivia Cooke, Douglas Smith, Erin  
Moriarty, Matthew Settle

Release date: 27.11.2014

Each of us tried with friends to conjure ghosts through the spiritual board in youth. And we all know that "Hey, whoever moves with it, stop it immediately!" It's basically an innocent and popular game during midnight pyjama's parties when the room is only lit by flickering candle light. What if there would have really been a contact and the ghost hasn't been in the playful mood? That is exactly the plot of Ouija horror (which is also



the name of that board). It's not original, but believe that it will scare you a lot. We strongly recommend not to play Ouija after the return from the cinema.

## AZERBAIJAN – THE MAGICAL LAND OF FIRE

Náprstek Museum of Asian, African  
and American Cultures, Prague 1  
28.11.2014



The exhibition in the Náprstek Museum of Asian, African and American Cultures – Azerbaijan – Magic Land of Fire opens to its visitors a unique treasury of Azerbaijan museum collections coming from the distant past of many ancient archeological and architectural monuments. There will be displayed a wide range of subjects through pottery, jewelry, coins, masterfully made metal objects for musical instruments or weapons. Particular attention should be deserved for famous Azerbaijani carpets in which patterns is reflected the diversity and colorfulness of the local landscape.

One of the world's best FMX events continues with 14th edition. The organizers have prepared a completely new things, tricks that you won't be able to understand and fusion of motorcycles, cars and snowmobiles, which has never been seen before. "The whole history of GG is accompanied by the best riders of the planet, so it's the standard. We really and demonstrably had inspired many of the world shows. We know that all the people are excited to see FMX in Prague, just to see what we managed to create again. We want to move from the spot again, one of the role will have Robbie Maddison," said the organizers.

## FMX

O2 arena, Prague 9  
Price: from 445 Kč  
29.11.2014



# MOSCOW CITY BALLET

Kongresové centrum Praha, Prague 4  
Price: from 490 Kč  
30.11.2014



Let yourself be carried away by the first Advent Sunday into a fabulous, romantic story of the beautiful princess Odette and wild and passionate black swan Odilia. JVS Group will bring you a story full of love, passion, stunning music and perfect ballet performances. Swan Lake by Pyotr Ilyich Tchaikovsky's ba-

llet is perhaps the most famous work in the world. Stage full of graceful ballerinas – swan – hovering on tiptoe over the “level” of podium belongs to the very basics of ballet classics. Moscow City Ballet, which is the most often visiting ballet group of the world will show you the performance in full deployment.

# THE HOBBIT: THE BATTLE OF THE FIVE ARMIES

Adventure / Fantasy, USA / NZ, 2014  
Director: Peter Jackson  
Stars: Ian McKellen, Martin Freeman,  
Richard Armitage, Orlando Bloom  
Release date: 11.12.2014

The battle of Middle-Earth is again on the top! The Hobbit: The Battle of Five Armies concludes the epic adventures of Bilbo Baggins, Thorin Oakenshield and a group of dwarves. When they fight the dragon Smaug and manage to retake their homeland, they unintentionally released a deadly power into the world. Enraged Smaug spits his burning anger on defenseless men, women and children in the Lake city. Thorin's obsession with accumulating acquired treasure, which despite Bilbo's efforts sacrifices friendship and honor, leads the hobbit to desperate and dangerous decisions.



# GRÉVIN PRAHA

Celetná 15, Prague 1  
Phone: + 420 226 776 776  
info.praha@grevin.com  
www.grevin-praha.com



Grévin wax museum offers an interactive entertainment on 3000 m<sup>2</sup> area, meeting with 80 personalities from history and all of them in amazing design set from history to present. Look forward to meet with Hollywood stars like Angelina Jolie, Brad Pitt, Meryl Streep, Michael Jackson, Jean Paul Belmondo, Cameron Diaz, George Clooney and Nicolas Cage. Unique concept of Grévin museum offers spectacular expedition across different time eras, which is enhanced by professional scenography, music and light effects. The tour takes at least an hour and half.

## FEEL LIKE IN HOLLYWOOD!



**A**lthough you won't find any Hollywood movie stars in the Czech streets, many of them were filming here. So you can make a picture of Czech sites that adorn a lot of famous Hollywood movies.

We have to start with the blockbuster *Mission: Impossible* from 1996 with Tom Cruise in the lead role. It was the first major Hollywood production that visited Prague and the filmmakers had used a number of gorgeous Prague scenes. The party at the embassy was filmed at the National Museum, the escape from modern glass restaurant (cover photo) on the Old Town Square. In this case, however, keep in mind that the restaurant itself doesn't exist – it was made just for the purpose of filming the movie.

After 15 years the production of *Mission: Impossible* returned to Prague, this with the fourth chapter – *Ghost Protocol*. They used the Main Railway Station (the opening scene with killed agent) or the corner house in the street Pštrossova 17, where Ethan Hunt ran from the police. In 2002 Anthony Hopkins and Chris Rock visited Prague together to shoot an action thriller *Bad Company*. Rock was chased

by bad guys in Thun Street in Lesser Town (Malá Strana), Hopkins' agent went to helmet him through Castle stairs (Zámecké schody). Together they went to the Castle Square. They also used the Shooter's Island (Střelecký ostrov) in the Old Town (the scene with atomic bomb dealer).

Even the legendary vampire slayer *Blade* used the streets of Prague in his second adventure movie. From the entrance next to the pizzeria in the Sokolovská Street, the filmmakers made a vampire blood bank. And for the seat of vampire family *Damaskinos* they used secluded place of Vaničkova Street.



Prague had a key role in the action movie of *Vin Diesel xXx* filmed in 2002. Beginning of the movie was shot on the Old Town Square (the producers managed to depopulate it, which was almost an im-



possible task), then the camera wandered the Týnská Street, the Powder Gate, the Republic Square and the seat of the Czech philharmonic – Rudolfinum. In 2004 our country was visited by Wolverine – Hugh Jackman, in those times wi-



thout his comic book claws, but with his long coat and hat as Van Helsing. The battle in the village with three brides of Dracula (probably the best part of the movie) was filmed at the Kunratice Castle in Prague 4. Then the hero walks the street Na Kampě under the Charles Bridge, where



one of the brides offers him a trade. The magnificent ball of vampires was filmed in the Saint Nicholas Church.

This list of Hollywood hits, which included Prague to its scenes, naturally doesn't end. Furthermore, there were shot movies like The Bourne Identity (street Kampa, street of Political prisoners, the Senovážná square) or A Knight's Tale (Prague Castle, the Charles Bridge). Before the walk in our metropolis we recommend to watch all of these mentioned movies.

th.

# SEGWAY TOURS

## 3 HOURS TOUR IN 7 LANGUAGES

PHONE

+420 731 238 264

MEETING POINT NEAR CHARLES BRIDGE

OUR PRICE

1500 CZK  
/PERSON

segwayfun.eu

# INTERVIEW: Vlastimil Musil

**H** *He deals with Bohemian garnet processing already for 30 years. The production of jewellery becomes for him almost whole-life fulfilment of interests. In the interview with him, you can simply recognize a love to craft: Even after such a long time, he can't talk about the garnet without a spark in his eyes. And also, he has a penchant for tie clips and cufflinks. That all is the sales and marketing director of co-operative Granát Turnov Vlastimil Musil.*

**Can you describe, in what lies the uniqueness of Bohemian garnet?**

Bohemian garnet is unique because of its originality and bloody red color. Because we mine and process it in Czech Republic, it became our national tradition and national wealth. Its bloody red color is unmistakable and together with the tradition and national meaning that stone makes also the whole jewel unique.

**How is it with Bohemian garnet worldwide?**

Our co-operative has its customers worldwide, from United States through Europe to Japan. Ask foreign tourists, they'll tell you, what am I talking about. Jewelry with Bohemian garnets are very favored between foreign tourists or customers in foreign countries.

**Why would you recommend Bohemian garnet?**

A customer, who bought original jewel with Bohemian garnet, chose a right variant. He bought something original, he bought a present or jewel, which has a direct relation to visited country, and when he wears this jewel, even after a long time, he will remember with a pleasure those nice whiles spent in Prague or in other Czech city or town.

**How one recognizes Bohemian garnet?**

Jewelry with Bohemian garnets have its specific characteristics and shape. Since Bohemian garnets are quite little stones, the jewel is characteristic by a big field of small, bloody red stones. Its size is roughly 2.5 to 5 mm. Original jewellery is delivered together with a certificate of authenticity, which is equipped with a holographic label in a shape of logo of our co-operative and it is made under trademarks Český granát (Bohemian garnet) and Granát Turnov (Garnet Turnov). Each jewel is marked by hallmark in a shape of letter "G".

**You lead even a museum of Bohemian garnet in Turnov. What all does it offer?**

A visitor may become familiar there with a history of both the extraction, and also processing of Bohemian garnet. Even more this year, we'll celebrate 60 years of this tradition. In museum, customer center and Galerie Granát (Gallery Garnet) we perform these works to visitors and they can try then the production themselves.

That is very impressive and it catches eye of many incomers. In ground floor, there are our stores, where tourists can buy our goods with advantage.





Granát, artistic manufacturing cooperative, Turnov The manufacturer of the traditional jewelry from Bohemian garnet. The biggest collection with modern design patterns. The only owner of a Bohemian garnet strip mine.

Shops: Praha 1, Dlouhá 28 a 30 - Praha1, Panská 1 - Praha 1, Pánská pasáž,  
Na Příkopě 23 - Turnov, nám. Českého ráje 4 - Liberec, Pražská 502/3 - České  
Budějovice, Dr. Stejskala 9 - Český Krumlov, Latrán 53

[www.granat.cz](http://www.granat.cz), [www.granat-shop.cz](http://www.granat-shop.cz)



M7

## PYLONES DESIGN SHOP

Karlová 178/22, 110 00 Praha 1  
Phone: +420 774 772 402  
[www.pylones-eshop.cz](http://www.pylones-eshop.cz)

PYLONES designs, manufactures and retails a range of beautifully designed household objects which are fun, colorful and affordable. By producing its own-label products in the company's distinctive packaging, PYLONES offers its customers an ideal gift-shopping experience. With a range including kitchen instruments, bathroom accessories, office supplies, baby gifts, jewellery, stationery and personal accessories, every product is designed and produced exclusively for PYLONES.



## GRANÁT TURNOV

### ГРАНАТ ТУРНОВ

Dlouhá 28 - P-1, Pánská pasáž - Na Příkopě 23 - P-1, Panská 1/892 P-1

В этом году кооператив художественного производства „Гранат Турнов“ отмечает 60 – летнюю традицию производства украшений с чешскими гранатами в г. Турнове и в Чешской Республике. „Гранат Турнов“ в настоящее время является самым большим производителем украшений с чешскими гранатами. Чешские гранаты известны во всем мире. Если вы желаете купить или просто увидеть различные драгоценные камни, посетите три наши магазины в самом центре Праги.



M7

## PALLADIUM

Náměstí Republiky 1079/1a  
Prague – Nové město  
Phone: +420 225 770 250,  
[www.palladiumpraha.cz](http://www.palladiumpraha.cz), [www.facebook.com/palladiumpraha.cz](http://www.facebook.com/palladiumpraha.cz)

Palladium is a modern shopping center with a widest range of stores, restaurants and services within the historical part of Prague. In five floors, visitors can find almost 180 stores, 20 restaurants, coffee bars and bars and in the ground floor, almost 900 parking places. A sensitive combination of historical features with a modern architecture creates an unique atmosphere, which makes from shopping a real experience.



## SOMS THAI

Moravská 20, Prague 2  
Phone: +420 222 516 403  
[www.soms-thai.cz](http://www.soms-thai.cz)

Smaller massage studio with a family atmosphere offers a perfect experience of certificated Thai masseuses (of course native Thai women) who have rich experience not only in Thailand but also from the Czech Republic. They offer traditional Thai massage, reflexology foot massage, Thai or peeling oil massage and many others. Till the 31st of December 2014 are some types of massages discounted.



## LONDON CALLING

Seifertova 20, Prague 3  
Phone: +420 604 566 572

The original Žižkov secondhand outlet focusing on models from London. Sea of interesting men's shirts (usually with movie themes or similar treat for lovers of stylish clothing), women's tops, dresses and lots of other things (books, comic books and CDs) from the city over the Thames. All at great prices. If you have weakness for the British style, or you want to buy something "little different", London Calling will be your favorite place to buy.



## CENTRUM ČERNÝ MOST

Chlumecká 765/6, 198 19 Prague 9  
Phone.: +420 281 918 100  
[www.centrumcernymost.cz](http://www.centrumcernymost.cz)

New shopping center Černý Most is recognized as the most modern commercial shopping center in the Czech Republic. And it's not just a hype. This project was designed by leading British architects Benoy Company which is with its sophisticated and unique designs known throughout the world. The result is a truly amazing shopping center that is inspired by its airiness like in U.S. commercial malls.



**PYLONES**  
créateur d'objets à Paris



*Pylonès stores:*

**Karlova 178/22  
28. října 376/11**





**SERVICE****Alimex ČR**

It offers car delivery to anywhere in Prague within 30 minutes, and delivery to anywhere in the Czech Republic within 90 minutes, or with rentals exceeding 10 days, for free. Seven hundred cars in various categories are at your disposition. Operating leases are also an option.

**Rate: 300–1500 CZK/day**  
**Aviatická 1048, Prague-Ruzyně**  
**Phone: 220 114 860, [www.alimex.eu](http://www.alimex.eu)**

**A-Rent Car**

Discount rates are provided for medium and long-term rentals. Immediate vehicle replacement in the case of a breakdown or accident is guaranteed. The rented vehicle may be returned to any of the rental locations at no extra charge.

**Rate: 1300–4415 CZK/day**  
**V Celnici 10, Prague 1**  
**Phone: +420 224 211 587**  
**[www.arentcar.cz](http://www.arentcar.cz)**  
**Opening Hours: Mon–Sun 07:00–19:00**

**JS-car**

Vehicles, mainly Skoda cars, are available for rent. Unlimited mileage is given on all rentals. 30% is added onto the rental fee for one-day rentals. Special offers for certain cars are provided for customers.

**Rate: 560–2100 CZK/day**  
**Psohlavců 1360, Prague 4**  
**Phone: + 420 602 216 415**  
**[www.iautopujcovna.cz](http://www.iautopujcovna.cz)**  
**Opening Hours: Mon–Sun 08:30–17:00**

**Car Rental Prague**

Car rental in the centre of Prague great prices a wide selection of cars Škoda and high class cars with automatic transmission VW Passat, Chevrolet... (station wagon, diesel motors). Car accessories children's car seat, ski racks, navigation. Car delivery to Prague airport Vaclav Havel, Hotel or in office near station metro Dejvicka line A.

**Svatovitská 7, Prague 6**  
**Phone: +420 602 722 501**  
**+420 224 314 361**  
**[www.carrental.cz](http://www.carrental.cz)**  
**[www.carrentalprague.com](http://www.carrentalprague.com)**

**Avis**

Approximately 5000 vehicles are at your disposal. The selection is conveniently divided according to the category of vehicles. Avis offers to arrange returning the car to other European countries than the Czech Republic.

**Rate: 35–132 Euro/day**  
**Klimentská 46, Prague 1**  
**Phone: 221 851 225**  
**[www.avis.cz](http://www.avis.cz)**  
**Opening Hours: Mon–Fri 08:00–16:30**

## Pražská informační služba

The Prague Information Service is a network of information centers in Prague. It offers tourist information and services. The branches located in the centre offer GPS rental. Service is available in English only.

**Rytířská 31, Prague 1, [www.praguewelcomes.cz](http://www.praguewelcomes.cz), Opening Hours: Mon–Sat 09:00–19:00.**

**Staroměstské nám. 1, Prague 1, [www.praguewelcomes.cz](http://www.praguewelcomes.cz), Opening Hours: Mon–Sat 09:00–20:00, Sun 10:00–19:00**

**Mostecká tower, Prague 1, [www.praguewelcomes.cz](http://www.praguewelcomes.cz), Opening Hours: Mon–Sun 10:00–18:00**

# RENT-A-CAR

RUNWELL

- > New cars with A/T, M/T
- > Office and the parking place in the center of Prague
- > All included
- > Season discounts up to 15%
- > Online reservation discounts
- > Free GPS
- > Wi-Fi on the board
- > 24/7 emergency service in English, Russian, Czech languages

**WEEKEND TARIFF**

Czech DINNER  
for free\*

+ 420 728 500 100

[www.runwellrentacar.com](http://www.runwellrentacar.com)  
[facebook.com/runwellrentacar](https://facebook.com/runwellrentacar)

\* Rent a car in Prague for more than 4 days

## ticket sales

### Ticketpro

**Prague Tourist Center – Rytířská 404/12, Prague 1. Opening Hours: Mon–Fri 09:00–19:00, Sat–Sun 12:00–19:00**

**Ticketpro Rokoko – Václavské náměstí 38, Prague 1. Opening Hours: Mon–Fri 11:00–19:00**

**Pražská informační služba – Rytířská 31, Prague 1. Opening Hours: Mon–Sat 09:00–19:00 – Staroměstská radnice, Prague 1. Opening Hours: Mon–Sat 09:00–20:00, Sun 10:00–19:00**

**Bohemia Ticket – Na Příkopě 856/16, Prague 1. Opening Hours: Mon–Fri 10:00–19:00, Sat 10:00–17:00, Sun 10:00–15:00. [www.ticketpro.cz](http://www.ticketpro.cz).**

### Ticketportal

**Via Musica – Malostranské náměstí 13, Prague 1. Opening Hours: Mon–Sun 10:30–18:00**

**Lucerna music Bar – Vodičkova 36, Prague 1. Opening Hours: Mon–Fri 10:00–13:00; 14:00–18:00**

**Divadlo Hybernia – Náměstí Republiky 4, Prague 1. Opening Hours: Mon–Sat 11:00–19:00**

**Roxy – Dlouhá 33, Prague 1. Opening Hours: Mon–Fri 10:00–18:00. [www.ticketportal.cz](http://www.ticketportal.cz).**

SERVICE

## taxis

### Cedaz Praha

Public shuttle bus from airport to the centre of Prague or back. Comfortable and direct transport from V Celnici street. Tickets can be bought directly from the driver.

**Phone: +420 220 116 758**

**www.cedaz.cz**

### Taxi Praha

Taxi Praha offer the possibility of calling a taxi on-line. The fare can be calculated on the website. Trips are monitored by GPS for the customer's safety. Rate: without dispatcher 28 CZK/km in Prague, via dispatcher 24 CZK/km in Prague

**Vrchlického 9, Prague 5**

**Phone: + 420 222 111 000**

**www.taxi-praha.cz**

### AAA Taxi

The customers are offered individual way of transport, which provides privacy, comfort and safety. AAA Taxi belongs to the cheapest ones in whole Prague. Rate: from 16.90 CZK/km in Prague

**Phone: +420 222 333 222**

**www.aataxi.cz**

### Speed Cars

In spite of being a relatively new company on the market, Speed Cars have sparked great interest among customers. They provide an online fare calculator, as well as car pick-up. Rate: 19 CZK/km in Prague.

**Pacholíkova 4, Prague 2**

**Phone: 224 234 234**

**www.speedcars.cz**

# TRANSPORT TO THE AIRPORT

**PRAGUE AIRPORT TRANSFERS**  
*feel the difference*® S. R. O.



## TAXI

**PRIVATE TRANSPORT**

max. 4 persons **CZK 550 (€ 21)**

## MINIVAN

**PRIVATE TRANSPORT**

max. 8 persons **CZK 780 (€ 30)**

## SHUTTLE

**SHARED DOOR-TO-DOOR**

1 person **CZK 290 (€ 11)**

2 persons **CZK 450 (€ 17)**



Call us on freephone **800 870 888** or **+420 222 554 211**,  
email us at [info@prague.co.uk](mailto:info@prague.co.uk) or book online at our website

**WWW.PRAGUE-AIRPORT-TRANSFERS.CO.UK**

# PRAGUE TAXI SERVICE



TERMINAL 2



Watch how we fetch you. Download an app to a phone that runs on Android and order a taxi for a reasonable price.

**Call our cheapest taxi in Prague. Price: CZK 16,90,-/km**

*Prague taxi service with more than 22 years of transportation experience in Prague, the Czech Republic, and Europe*

**+420 222 333 222 +420 729 33 11 33**

**Nonstop service • We speak English**  
**Free pickup service in Prague**  
**Approximate price calculation**  
**More than 1200 cars available**  
**Credit cards welcome**  
[www.aaataxi.cz](http://www.aaataxi.cz)



**REGULAR SHUTTLE BUS • AIRPORT ↔ CITY CENTRE**

**COMFORTABLE AND DIRECT  
TRANSPORT FROM PRAGUE AIRPORT  
TO THE CITY CENTRE OR BACK**

**Airport bus stop – Arrival Terminals  
T1 exit F or T2 exit E**

**Bus stop – CITY CENTRE  
V CELNICI Street**

**•NEXT TO METRO LINE B•  
• 40 METRES FROM NÁMĚSTÍ REPUBLIKY•**

**TICKETS CAN BE BOUGHT  
DIRECTLY FROM THE DRIVER**



[www.cedaz.cz](http://www.cedaz.cz)



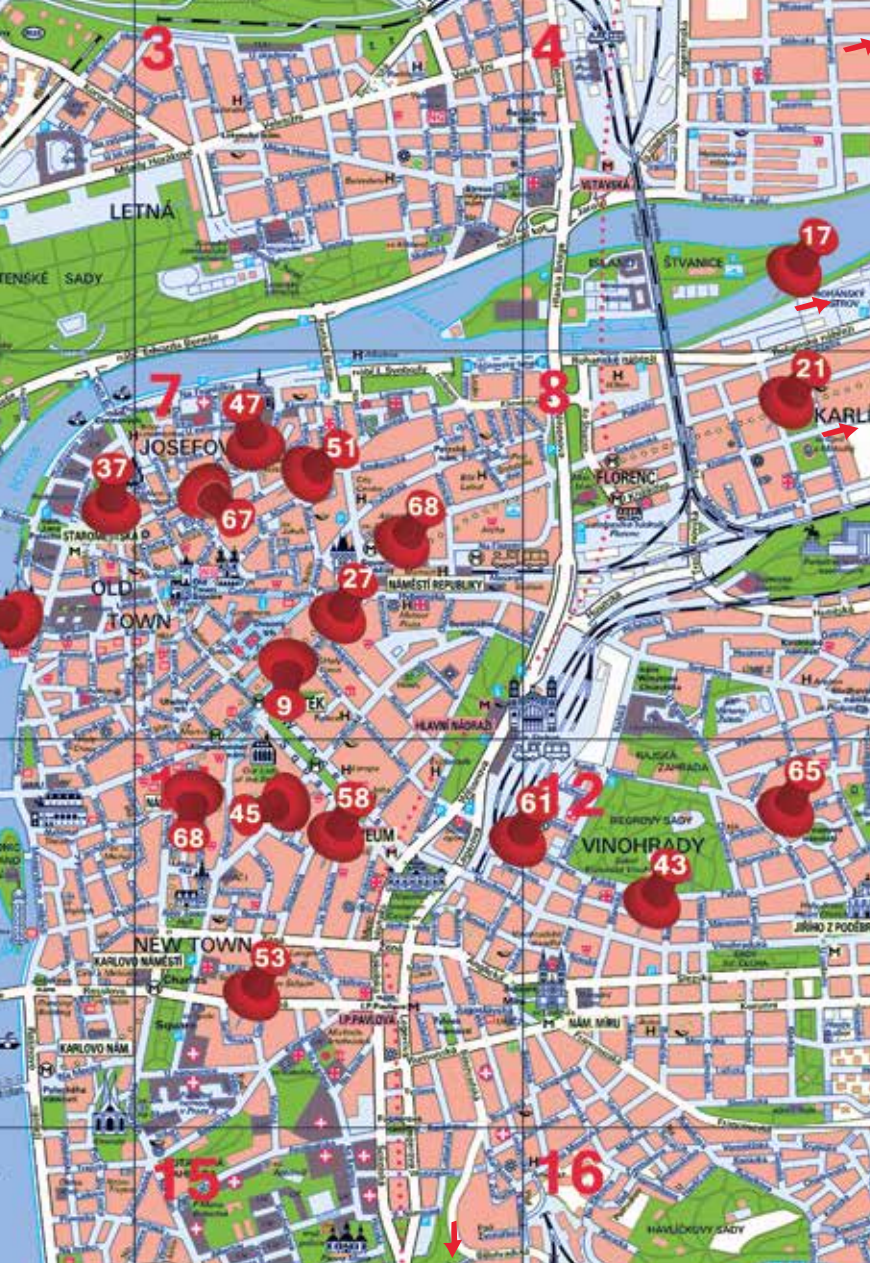
- 5 CITY GALLERY PRAGUE
- 9 FUTURISTA
- 17 GO-KART
- 21 O2 ARENA
- 27 SHOOPS GRANÁT
- 37 NAM - JAI
- 47 ROXY
- 51 HARLEY'S MUSIC BAR
- 53 RODEO
- 55 Club Moon
- 58 DARLING
- 59 RELAX MASSAGES
- 61 NEON CLUB
- 65 EGYPTIAN MASSAGES
- 67 GALERIE LA FEMME
- 68 CAFÉ LOUVRE



PAGE NUMBER







3

4

LETNÁ

JOSEFOV

37

47

51

8

17

21

7

OLD TOWN

27

68

9

61

65

45

58

68

43

NEW TOWN

53

2

15

16

VINOHRADY

HAVELKOVY SADY

## HOTEL TIPS

# Sleeping Beauty

**G**ood sleep is the basic. Specifies the energy for the next day, the quality of work performance, mood, it is a driving motor. And it is important to know how this "obligation" to use perfectly as a third of life you spend sleeping. It is the same with the holiday.

If you really want to enjoy the relax, you need the best sleep comfort. Prague offers countless places where you can lay your head well.

Therefore, we bring you an exclusive hotel tips, which you definitely will not regret. Excellent service is guaranteed, you will sleep like you have never slept before. It's guaran-

teed by five out of five Sleeping Beauties. We wish you a pleasant time spent and enjoy the city. It is worth it!

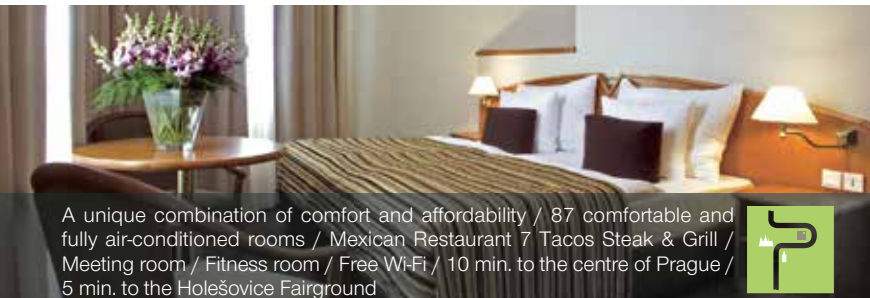
*th*



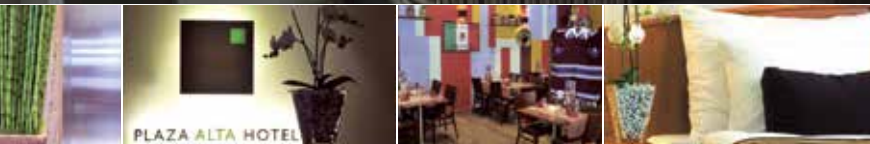
PLAZA ALTA HOTEL

★ ★ ★ ★

Plaza Alta Hotel & Eco-Friendly Hotel



A unique combination of comfort and affordability / 87 comfortable and fully air-conditioned rooms / Mexican Restaurant 7 Tacos Steak & Grill / Meeting room / Fitness room / Free Wi-Fi / 10 min. to the centre of Prague / 5 min. to the Holešovice Fairground



PLAZA ALTA HOTEL

Ortenovo nám. 22, Prague 7, Czech Republic, +420 220 407 011, [booking@plazahotelalta.com](mailto:booking@plazahotelalta.com)

[www.plazahotelalta.com](http://www.plazahotelalta.com)

Only 1/2 minute from Old Town Square  
NAM JAI S.R.O., KAPROVA 11, 110 00, PRAHA 1  
Open daily from 10:00 to 22:00  
We accept €, US-\$ & all major credit cards  
t: 222 328 747 m: 724 595 314 e: info@namjai.cz

**A SEASON  
FREE  
FROM STRESS!**

**Show  
this ad & get a  
20% discount  
on the following massages:**

Traditional Thai Massage: 60 min. 799Kč 640Kč / €24

Thai Foot Massage: 60 min. 799Kč 640Kč / €24

Thai Oil Massage: 60 min. 899Kč 720Kč / €27

Thai Oil Massage: 90 min 1-249Kč 1 000Kč / €37

Thai Aroma Oil Massage: 60 min 949Kč 760Kč / €29

Thai Aroma Oil Massage: 90 min 1-299Kč 1 040Kč / €39



*Nam Jai*

IS TRADITIONAL THAI MASSAGE

NAMJAI.CZ







## With sport to health

We have chilly months before of us and it clearly asks for some movement, because the body organism can be very fragile during the winter time. Unfortunately, even this year looks like months without the snow. Therefore we chose a predominantly urban outdoor tips in which you can really enjoy themselves and you won't need any ski boots. However, be careful. There is no greater pain in the ass then spend Christmas with plaster. This is something we don't wish to anybody.

## KUTNÁ HORA

[www.kutnahora.cz](http://www.kutnahora.cz)



Kutná Hora is ranked alongside the most historically important cities of the Czech Republic. The history of our country already began in the early Middle Ages, mainly thanks to the local silver mines. Thanks to the mines Kutná Hora is (“kutat” is an old Czech word for “mine”) considered the treasury and jewel of the country, whose wealth is at the very beginning of the expansion of the kingdom. It can be proud of a wide range of architectural styles and completely unique buildings from different historical periods. From all of the streets, houses and churches can be felt its long history full of important events. Recent years are also in the name of return to the winemaking tradition which used to be an integral part of the local heritage of the city. The historical center of Kutná Hora with late Gothic Church of St. Barbara and the Church of the Assumption of the Virgin Mary in Sedlec is a uniquely preserved medieval urban structure with a number of Gothic, Renaissance and Baroque houses. Other important monuments are the Italian Court, late Gothic Stone House, church of St. Jacob, Jesuit College or monastery of St. Ursula. You will certainly have something to look at during the visit.

# SVEZENÍČKO

www.svezenicko.cz



Lamborghini Gallardo. Ferrari F430. Porsche 911 Techart. Chevrolet Camaro SS. Ariel Atom. Driving on off-road polygon with Hummer H1. Or maybe a hovercraft. It's not an impossible dream. That is the current offer from Svezeníčko. Our company can offer you all these car brands (and much more) for a reasonable price and in one place. An experienced driver instructor is ready to help, will explain everything and take special care of your safety, so you can perfectly enjoy the best ride in your life.

# MERCURIA LASER GAME

Argentinská 38, Prague 7 – Holešovice,  
Phone: +420 605 111 811  
www.mercurialaser.cz

Mercuria Laser Game is the new and largest laser game arena in Prague, located just 3 minutes walk from the underground station Nádraží Holešovice. In this unique laser game you can enjoy an arena larger than 400 square meters. During the game you can listen to music from the cult movie Mortal Combat. You will really enjoy the victory. The winner gets a big Kofola or free beer for his invincibility. Both can be used in a wide space bar with more than 60 seats. In addition to the laser game, you can choose different form of entertainment: table football, darts or children favorite arcade games (motorcycles, cars and House of Dead.)



# CRYPTEX

Koňenského 1054/3, Prague 5  
Phone: +420 774 110 782  
www.cryptex.cz



Cryptex is a real life escape game, a one of a kind attraction in Prague. You can always go to a bar for a drink, but if you want to experience something new something different with your friends you should visit us. Come and hunt for the treasure of a wealthy businessman, who was forced to flee the city. Or try to deactivate a bomb, what is aimed to eliminate a feared mob boss. Whatever you choose we guarantee that you and your friends are going to have a unique experience. Please check online or through the phone in advance for availability.



## MAXLASERGAME

Plzeňská 1270/56, Prague 5  
Phone: +420 774 454 656  
[www.maxlasergame.cz](http://www.maxlasergame.cz)



You adore action, but fighting in muddy terrain isn't exactly what you need? Try Lasergame Prague arena, which is full of light and smoke effects. Thanks to our modern equipment you will have almost futuristic experience. After the game, you can relax in comfortable seat and enjoy the bar fully stocked with various refreshments. Lasergame can be played up to 16 players and truth is that more of them are participating in a game, more enjoyable it is, thus do not hesitate to recruit as many people as possible. More heads, more targets for your weapon. [www.maxlasergame.cz](http://www.maxlasergame.cz)



## SVEZENIČKO

Airport Líně u Plzně  
Phone: +420 608 140 092  
[www.svezenicko.com](http://www.svezenicko.com)

Lamborghini Gallardo. Ferrari F430. Porsche 911 Techart. Chevrolet Camaro SS. Ariel Atom. Driving on off-road polygon with Hummer H1. Or maybe a hovercraft. It's not an impossible dream. That is the current offer from Svezeníčko. Our company can offer you all these car brands (and much more) for a reasonable price and in one place. An experienced driver instructor is ready to help, will explain everything and take special care of your safety, so you can perfectly enjoy the best ride in your life.

## PAINTBALL PRAHA

[www.paintballgame.cz](http://www.paintballgame.cz)

Probably every guy was playing with sodas. In the childhood it was enough to have few sticks instead of a gun. Later comes time for pc and consoles. But sitting on couch with a remote control in your hand isn't such a dangerous experience. Even the best games are not equal to the crawling through the woods with a few bullets in your shotgun, all friends are falled and enemies is coming to get you. THAT is the feeling which turns boys into a men and thanks to Paintball Prague you can experience it in the indoor or outdoor space.





# D a ě i c k ý

the traditional restaurant  
in historical town  
**KUTNÁ HORA**



**Rakova 8 ~ Kutná Hora ~ tel.: +420 327 512 248**  
**[www.dacicky.com](http://www.dacicky.com)**

## WELCOME THE YEAR 2015



And here it comes. We can enjoy another wild New Year's Eve with full load of music, drinks and unique experiences. Because of choosing of the places in Prague is not easy, twice as much if you don't know the city very well, we bring you some tempting tips which you won't regret. Entertainment till the morning is guaranteed, but we are not liable of your condition. Our selected companies won't make it easy for you, so if you are planning to go to bed after midnight, just skip these pages. There is no place for weaklings!

## KONEC KONCŮ

Římská 45, Praha 2 - Vinohrady  
Tel.: +420 222 544 803  
[www.facebook.com/koneckoncu](http://www.facebook.com/koneckoncu)

You can't decide whether to celebrate New Year's Eve in a restaurant or club? So choose „Konec Konců“ and you don't have to care about anything - it's both in one place. From the excellent restaurant where you can order specialties of international cuisine and Pilsner Urquell or Excellent or wine directly from the barrel you can get with only few steps to modern furnished Music club. Classic banquet is a common thing, but they also don't exclude some other, rare or unusual wish - it's all up to you and your imagination.



## SHIPS AND STEAMERS PRAGUE

[www.parniky-praha.eu](http://www.parniky-praha.eu)  
Phone.: +420 773 903 903

Do you feel that you had on New Year's Eve, nothing can surprise you? If you have not tried view of the water, we guarantee you that you still have to discover. From the Vltava will open unusual panorama, which offers a completely new and unexpected angle on the end of the year (and that you will see many sights). New Year cruises offers Steamers Prague EU follows: 22: 30-01: 30h for 2.250, - / pers., 19: 00-22: 00h for 1.290, - / pers., 12-14h - 800, - / person. and 14-16h - 800, - / person ..

## ROXY

Dlouhá 33, Prague 1  
Phone: +420 776 310 950  
www.roxy.cz



## RADOST FX

Bělehradská 120, Prague 2  
Phone: +420 603 193 711  
www.radostfx.cz

In 1999 a British club magazine **MINISTRY** ranked Radost FX among the 20 best clubs in the world and after 15 years it's still the same. The evidence is that it hosts numerous events and performances by domestic and foreign star or that the club was a spot where Rihanna was filming her music video. Radost FX belongs not only to Prague's but also world's best clubs and it's a place where boredom is a foreign word. Multi-functional space includes a restaurant, café bar and mentioned club that is situated on the lower floor. You can enjoy a laser show, go-go dancers, great drinks and mostly engrossing atmosphere that your enter of the New Year will be really fun.



Roxy is a very interesting business with more than 17 years' tradition. It consists of a main hall with a stage and two bars on two floors plus the adjoining room with another bar and game room. NoD is an experimental space on the upper floor, where you can find a theater area with complete technical equipment, interesting gallery halls and café bar overlooking the Národní street. Roxy and NoD are inviting you for New Year's Eve and repeating the successful concept of New Year party on three stages. The unusual connection of the club Roxy and experimental NoD presents New Year's Eve party with resident DJ Chris Sadler and his guests.

## DIVERSE MADONA

Pod Děkanou, Prague 4  
Phone: +420 777 066 902  
www.madona.cz



You don't like the stereotype? Then Madonna Music Bar is suited just for you. The foreign karaoke, discotheque, video party and parties in the style of 80's and 90's + modern dance music is all they can offer. Similar program is planned for you on New Year's Eve. This bar has 12m long bar which is available just for your orders, so do not be afraid that you would have to wait for drinks in queue. You will find a wide range of alcoholic and non-alcoholic beverages, including 60 mixed cocktails. The bar is located in the main hall, which can accommodate about 150-200 people. And further ahead there is a small bar and naturally dance floor. Entertainment at the end of the year is guaranteed.





M11

## ISTANBUL KEBAB

Politických vězňů 933/17, Prague-Nové Město, Phone: +420 777 917 380  
[www.istanbulkebab.cz](http://www.istanbulkebab.cz)

The first kebab in Prague! Are you longing for Turkish food? Visit Istanbul Kebab. We recommend trying the Turkish pizza and you will be surprised with its form. Vegetarians will be able to choose meals too. As mentioned at the beginning, Istanbul Kebab belongs to the fast food category so the opportunity to take away your food is natural thing. However when you have time you can find seating there and you can taste the traditional Turkish tea along.



M6

## TRINIDAD - PRAGUE

U železné lávky 14, Prague 1  
 Phone: +420 723 473 013  
[www.restaurant-trinidad.cz](http://www.restaurant-trinidad.cz)

Restaurant Trinidad - Prague is located directly below Prague Castle across from the underground station Malostranská. Restaurant has a non-smoking and smoking area, and a large summer terrace. You can taste traditional Czech cuisine, pasta, tortillas, fish, seafood, salads and homemade pancakes. Emphasis is placed on selecting quality ingredients. Beer lovers will appreciate the famous Czech beer (light and dark) and there is a wide selection of Czech Moravian wines.



## TOVÁRNA NA ILUZE

Břehová 5, Prague 1  
 Phone: +420 727 977 730  
[www.tovarnanailuze.cz](http://www.tovarnanailuze.cz)

An excellent Czech cuisine based on recipes from the so-called First Republic that was a unique refuge of democracy and modern life in Central Europe of the interwar period. We continue the tradition of then elegant restaurants where top quality and the satisfaction of guests were a matter-of-fact. Try the favourite cocktails of Czech film stars the way they enjoyed them at the time of the greatest splendour of Prague film studios at Barrandov, which film makers called Hollywood of the East.



M15

## CHAPADLO

Nuselská 44, Prague 4  
 Phone: +420 241 404 337  
[www.chapadlo.com](http://www.chapadlo.com)

The restaurant Chapadlo in Nusle features a complex modern concept. Modern gastronomy goes hand by hand with well-sophisticated interior with clean lines and natural elements. Here are special offers of food prepared every month. You can find there even a 400g steaks. You can also use the offer of lunch menu. Drink arsenal in restaurant Chapadlo is filled with a wide offer of beers from Pilsner brewery and wines from the whole world.





## VESELÝ BIZON

Štefánikova 44, Prague 5  
Phone: +420 257 318 894  
[www.veselybizon.cz](http://www.veselybizon.cz)

Pleasant and comfortable interior offers this steak restaurant situated in Smíchov. Besides steaks there are a lot of grilled specialties served. New feature is the ostrich steak delivered fresh from the farm Studánka, which you should taste when you visit the restaurant. You will maybe be amused because names of dishes are chosen at least unusually, such as "Donald's seconds" – steak made from duck breasts with cranberries sounds really promising.



## JOHN LENNON PUB

Hroznová 495/6, Prague 1  
Phone: +420 257 214 266  
[www.johnlennonpub.cz](http://www.johnlennonpub.cz)

Whether you love John Lennon's classic music, delicious beer or a good meal, the newly opened John Lennon Pub is the right place for you. It's a pub where you'll only hear the Beatles, with posters of Lennon on the walls and an original red telephone booth adding to the atmosphere. Out chef's specialty is baked smoked knee on black beer and of course Pillsner Urquell. The „golden drink“ is represented by Gambirinus, black Kozel and non-alcoholic Birrell.



## JÁMA

V Jámě 7, Prague 1  
Phone: +420 222 967 081  
[www.jamapub.cz](http://www.jamapub.cz)

Jáma is classical American restaurant which has been running unbelievable 19 years in Prague. The speciality of restaurant are burgers prepared from beef and lots of other ingredients just up to customer (basically is meat rare, but connoisseurs may request a bloodier one). Jáma also offers 12 kinds of draft beer, whether by large, small or mini breweries. Jáma is restaurant with tradition, you find there nice and friendly staff and great atmosphere.



## KOGO

Havelská 499/27, Prague 1  
Phone: +420 224 210 259  
[www.kogo.cz](http://www.kogo.cz)

Magical atmosphere of the Old Town, flexous streets and passages. Here, in the shadow of grand church of st. Havel, is located restaurant Kogo Havelská. The restaurant offers some of the best gastronomic experience, delivering excellent Italian cuisine with Mediterranean flavors. It is based on high quality fresh ingredients imported directly from Italy, seasonal ingredients, homemade pasta, homemade desserts and bread. Summer garden is open from April to October.



## BARÁČNICKÁ RYCHTA

Tržiště 23/555, Prague 1  
Phone: +420 257532461  
[www.baracnickarychta.cz](http://www.baracnickarychta.cz)

This place has always been the meeting place of people in various cultural events such as concerts of various genres, dance nights, cabarets and much more. You would hardly find a saloon like this in Prague. It seems as if time has stopped. Its unique atmosphere and location will conquer you as well as excellent traditional Czech cuisine, delicious beer and friendly staff. If you don't select from the rich program, you can select "Baráčnická rychta" for private or corporate events.



## DYNAMO

Pštrossova 220/29, Prague 1  
Phone: +420 224 932 020  
[www.dynamorestaurace.cz](http://www.dynamorestaurace.cz)

If you are in the center of Prague and give on a nice impression, visit the restaurant Dynamo. In 1999 was awarded for its interior design, created by Olgoj Chorchoj and Ales Najbrt. Currently it has been changed by the fa Lavmi Babette Ondrová. The restaurant offers specialties of European cuisine and believe us, you will enjoy it. You can also be surprised by a large selection of wines from Moravia and all over the world. Enjoy your meal and have a great experience!



## SKLEPENÍ

Husitská 63, Prague 3  
Phone: +420 222 222 332  
[www.sklepeni.cz](http://www.sklepeni.cz)

The warranty of nice dining experience, friendly staff and comfortable seating. All this awaits you in an interestingly made cellar space of Žizkov restaurant Sklepení. Lovers of good steak, sweet foodies yearning for something lighter or beer lovers who just want to bite something to their favorite beer, they all come here to make their wishes come true. The restaurant is divided into smoking and non-smoking area and a lounge for private events, accommodating up to 30 people.



## U PIVRŇCE

Maiselova 3, Prague 1  
Phone: +420 222 329 404  
[www.upivrnice.cz](http://www.upivrnice.cz)

If a real Czech tavern is what you're after, you must be sure to check out the traditional pub U Pivrnice. One of the pub's most eye-catching elements are the comical hand-drawn pictures on the walls, featuring motifs of the legendary bar fly, Rudy Pivrnice. At U Pivrnice, good beer is usually served with traditional Czech specialties as well as (Try the Pivrnec guláš, a local dish which is best coupled with Pilsner Urquell, Gambrinus or Kozel). If you aren't too partial to beer, choose from a wide selection drinks.

# ROXY

P R A G U E

THE LEGENDARY CLUB  
IN THE HEART OF PRAGUE

[WWW.ROXY.CZ](http://WWW.ROXY.CZ)

DLOUHÁ 33 / PRAGUE 1

FOLLOW US



## TEA/CAFE TIPS



## CAFFÈ PER LEI

Karlova 154/17 Prague  
Phone: +420 775 062 243  
Opening hours: 10-22h

This famous café is located in the heart of old Prague center on the royal route. You can be pleased by stylish and comfortable interior, excellent international cuisine, delicious cakes and excellent Italian coffee brand Tonino Lamborghini. For your convenience you can find in Caffè Per Lei also Wi-Fi connection. We confirm the excellent and courteous service.



## CAFE U FÍLŮ

Klientská 2, Prague 1  
Phone: +420 603 824 861  
[www.cafeufilu.cz](http://www.cafeufilu.cz)

Café u Filů is a quiet restaurant with imaginative Czech cuisine in the center of the Pratur, accessible from the underground station Náměstí Republiky. It has very cozy interior with a family atmosphere, which is reflected on the honest and kind service. The capacity is 30 persons. Beer lovers will appreciate the Pilsner Urquell, black beer Kozel, wheat beer FENIX and a lot of beer delicacies. Café u Filů is suitable for people who love good food and homely atmosphere.



## BARISTA

Na Poříčí 24, Prague 1  
Phone: +420 727 963 540  
[www.archabarista.cz](http://www.archabarista.cz)

Symbiosis of an unique historic environment Czech Art Deco, the most recent of Czech design, the best artists, great coffee and Moravian wines of exclusive brand Barista's why it is worth to visit our café and concept store, love at first sight and regularly return. If you want to enjoy coffee in a totally unique environment that offers both culinary and cultural experience Barista is an ideal place to visit.



## THERAPY

Školská 30, Prague 1  
Phone: +420 774 491 177  
[www.cafe-therapy.cz](http://www.cafe-therapy.cz)

In the Školská street you can find an oasis of relaxation in the center of the Prague – café and restaurant Café Therapy. Aside of delicious food it's natural to divide the place into smoking and non-smoking area and wi-fi. For the little children there is a children's play area. It also includes a conference room in the back part of Café that is separated from the publicly accessible areas and is perfectly suited for celebrations and corporate events. The entire restaurant is fully accessible.



M8

## CAFÉ VÍTKOV

U památníku 1900, Praha/Prague 3  
Open: Wednesday - Sunday 10- 18  
(M): Křížkova Metro (774 m)

If you decided to visit the National Memorial on Vítkov, it's almost natural to visit Café Vítkov. Very modern interior and friendly prices will delightfully surprise you. There is also a cozy sitting in the garden with a great view of the city. Besides, they held exhibitions, debuts of books, cultural events, concerts and much more. In the case of event it's possible to extend the opening hours.



M11

## DOBŘÁ ČAJOVNA

Wenceslas Square 14, Prague 1  
Phone: +420 224 231 480, [www.tea.cz](http://www.tea.cz)

Dobrá čajovna was the first teahouse in Czech Republic and in the post-revolutionary period immediately attracted attention to itself. During the following years, Czech Republic became a country with the biggest concentration of tea shops in the world. Visit the unique space of this Mother of Tearooms, the place where it all started and in a pleasant environment do try some of the finest tea that has directly arrived from all the four corners of the tea world.

*Restaurant*

# Továrna na Iluze

## Illusion Factory



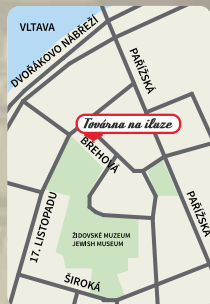
An excellent Czech cuisine based on recipes from the so-called First Republic that was a unique refuge of democracy and modern life in Central Europe of the interwar period.



**Reservation: +420 727 977 730**

**Břehová 5, Prague 1, 110 00**

[www.tovarnanailuze.cz](http://www.tovarnanailuze.cz)





## HEMINGWAY BAR

Karolíny Světlé 26, Prague 1  
Phone: +420 773 974 764  
[www.hemingwaybar.cz](http://www.hemingwaybar.cz)



The bar inspired by legendary American author and journalist Ernest Hemingway, as one of the most famous bar lovers, who made famous many cocktails. He innovated known recipes himself and therefore the world today know his bar cocktails as Hemingway Daiquiri or Papa Doble version. Hemingway bar also includes its favorite spirits. Absinthe, Rum and Champagne. The domain of Hemingway bar are first class cocktails prepared exclusively from premium and ultra-premium products and fresh fruit juices. You need to visit this place.

## ON A WAVE OF 30'S IN BLACK ANGELS BAR

Staroměstské náměstí 29, Prague 1  
Phone: +420 224 213 807  
[www.blackangelsbar.cz](http://www.blackangelsbar.cz)

Do you want to start step by step in more cultivated space, where you can really enjoy drinks and at the same time, you will get into absolutely unique environment? Then Black Angels Bar, which is built in a style of prohibition businesses of 30's, would not miss your attention. A really various menu of drinks waits for you, cocktails made of fresh fruit, a wide selection of wines, from eight p.m. a live music on piano and many drink specialties (definitely try „ice balls“). The bar quality is also confirmed by a fact that every year it is chosen by experts from foreign countries to the list of those the best bars, which you can find in whole Europe.



## CAFÉ, COCKTAIL BAR & LOUNGE PARC FERME

Vodárny 1226/6, Prague 3  
Phone: +420 222 516 097  
[www.parcferme.cz](http://www.parcferme.cz)

Stylish café, cocktail bar and lounge – Parc Fermé is just few steps away from the dominant of Královské Vinohrady – Vinohradská vodárna. In the original and cozy interior you can enjoy first class coffee – La Genovese which recently won a gold medal at prestigious international competition International Coffee Tasting 2012. In addition to the classic assortment of alcoholic and non-alcoholic beverages (we recommend cucumber lemonade) or mixed drinks, you can also enjoy a range of exclusive drinks. Of course there is a possibility of reservation for private celebrations, parties and presentations.



**Harley's Bar presents:**

**Party You will not Forget**

**Music, that makes You Move**

**Barstaff & Drinks, that will Rock You**

**Atmosphere You will remember**

**And if You Party Well, You Will See Hell of a Bar Show!**



**Dlouhá 18, Praha 1**

**Tel. +420 602 419 111 / [harleys@harleys.cz](mailto:harleys@harleys.cz)**

**JACK**  
LIVES HERE.  




## M1 LOUNGE

Masná 1, Prague 1  
Phone: +420 227 195 235  
www.m1lounge.com

Ideální místo kde být o Vánocích, na Silvestra nebo kde s přáteli uspořádat nekončící party, to je oblíbený klub M1 Lounge v blízkosti Staroměstského náměstí, který nabízí luxusní a upscale prostředí, v němž si dokonale vychutnáte každou minutu vašeho večírku. Plně dvojjazyčný personál rád udělá nabídku šitou přímo na tělo. M1 Lounge má zcela právem pověst jednoho z nejlepších a nejlépe zařízených koktejlových/tanečních klubů v Praze. Svůj podíl na tom má nepochybně luxusní VIP místnost.



## BARÁČNICKÁ RYCHTA

Tržiště 23/555, Prague 1  
Phone: +420 257 532 461  
www.baracnickarychta.cz

This place has always been the meeting place of people in various cultural events such as concerts of various genres, dance nights, theater of small scenes, cabarets and much more. You would hardly find a saloon like this in Prague. It seems as if time has stopped. Its unique atmosphere and location will conquer you as well as excellent traditional Czech cuisine, delicious beer and friendly staff. If you don't select from the rich program, you can select "Baráčnická rychta" for private or corporate events.



## ALOHA BAR

Dušní 31, Prague 1  
Phone: +420 602 251 392  
www.alohapraha.cz

Anyone, who likes the exotic environment, definitely shouldn't miss Aloha Music Club & Cocktail Bar. A unique music club and bar, located just "five minute walk" away from the Můstek underground station and the Old Town Square, is one of the most exciting bars in Prague: style of Hawaiian Islands, great drinks and thematic events overflowing with popular island's atmosphere.



## HANGAR BAR

Dušní 9/9, Prague 1  
Phone: +420 724 004 305, 602 251 392  
www.hangarpraha.cz

Do you want to enjoy the fire show full of adrenaline, excitement and sexy dance with the beautiful flight attendants in a unique environment in unique spaces that are using the legendary airlines Pan Am? With the Hangar bar you can't make a mistake. Relatively young club has style, excellent gastronomy, a wide range of drinks, handsome bartenders/pilots and waitresses/flight attendants.

THIS IS THE PLACE FOR NEW YEAR'S CELEBRATION.

# RODEO

music • cocktail • club

# NEW YEAR

Ječná 12/509, Praha, Nové Město • [www.rodeopraha.cz](http://www.rodeopraha.cz)



## EL MOJITO CAFÉ

Dlouhá 31, Prague 1  
Phone: +420 776 872 989

El Mojito Café Prague is so unique. You would hardly find any other type of business where they can serve you more types of Mojito as the name already suggests. If you are situated in the center of Prague, in the streets around Dlouhá Street we recommend you to go to one from the 25 kinds of Mojitos. You can find there also delicious food to eat. You will be fascinated in a very cozy interior with a unique touch of coastal states.



## LOCA CAFE BAR

Smetanovo nábřeží 24  
Phone: +420 212 240 967  
[www.locabar.cz](http://www.locabar.cz)

Do you long for a pleasant stay with a view of not only the river bank, but also to Prague Castle and Charles Bridge? Delicious food, good drinks and attentive service? Then LOCA CAFE BAR is the right choice! You will enjoy this stylish new restaurant not only because of its location on the Smetana riverside but also for the interior and everything it has to offer. And is not that little!



## ROXY

Dlouhá 33, Prague 1  
Phone: +420 776 310 950  
[www.roxy.cz](http://www.roxy.cz)

If you're looking for place that is in Czech Republic synonym for high quality dance parties and rave culture itself, Dlouhá 33 is the only correct adress. Dance parties headlined by the best foreign and czech DJs and producers have at ROXY more than 15 years tradition and you can taste here most of the classic dance music genres like house, drumandbass or techno same as the most actual and progressive stuff that is moving nowadays dance music scene.



## NAPA BAR & GALLERY

Prokopská 8, Malá Strana, Prague 1  
Phone: +420 777 255 066  
[www.napabar.cz](http://www.napabar.cz)

Joining a bar with a gallery, not bad of an idea! If you add in occasional gigs and small concerts in the bar, it even becomes an excellent combination. This is exactly what NAPA bar is like. Simply a relaxed bar, where they will take good care of you. You can for example enjoy the unique taste of the rum Zacapa, choose from a wide variety of other intoxicating drinks or play some pool.



# MOON

FREE WELCOME DRINK  
OPEN DAILY 9:00 p.m. - 5:00 a.m.

LESBI  
SHOW

TANTRA  
RELAX  
EROTIC  
MASSAGES

GOOD  
PRICES



DISCREET  
ENVIRONMENT

KARLOVARSKÁ 4  
PRAHA 6  
+420 606 485 145  
WWW.NIGHTCLUBMOON.CZ



## SINFUL NIGHT LIFE OF PRAGUE CITY

**W**hy will be deluding ourselves. Every good capital, whose streets pulsate with life, must have beside restaurants, bars, cafes and shopping centers also (as the novelists say) the houses of love. And even Prague is no exception. But before we go into its streets, let's make a small historic revision.

It is no longer the rule that these places are for desperate individuals. Time progressed. You can forget the red neon lights, a company of doubtful quality and cheating customers. Although the movies are convincing us that the so-called night clubs are cheap sources of vice, many psychologists have the opposite view: the company struggles

with excessive shame and these clubs can be the right medicine.

When was the phenomenon of night clubs or prostitution itself actually born? Well, not for anything they say that it's the oldest profession of the world. It is probable that prostitution has evolved from religious belief and rituals which were held to celebrate the goddess of fertility in the Middle-Age. In the 19th century it was strongly developed and reached all segments of society from politics to high art (for example Vincent Van Gogh lived for years with a Flemish prostitute).



Even fifty years ago, half of the prostitutes were involuntary. This should already be over. The paradox is that there were previously only 10% of prostitutes educated; now the 50% of them are college students. This is an education reform!

We know that it's not easy to find the right company in which you can feel natural and comfortable. Indeed, there are lots of them and if you had to visit them all, it would cost you the whole wealth.

For this reason, we are showing few short "best of" tips in the following pages. We guarantee that you definitely won't be bored. The ride full of excitement and beautiful women is awaiting!

*ml.*



**Surprise your friends!**  
**We can prepare a stripper in your limo**



**EXTRAS**  
**Stripper:**  
CZK 2000 (€ 40)  
**Lesbian show:**  
CZK 4000 (€ 80)

**Hummer H200 (max. 20 pax) 1-hour rental: CZK 4 650 (€ 186)**

**Lincoln TC120 (max. 8 pax) 1-hour rental: CZK 1990 (€ 80)**

Call us on freephone **800 870 888** or **+420 222 554 211**,  
email us at [info@prague.co.uk](mailto:info@prague.co.uk) or book online at our website

**WWW.PRAGUE-AIRPORT-TRANSFERS.CO.UK**

100% BEST IN CZECH REPUBLIC

# DARLING®

★ CABARET PRAGUE ★ *fashion*



Klára  
Monika  
Lucka  
Veronika  
Claudie

EVERYDAY PROGRAM FROM OUR  
PROFESSIONAL BALLET PERFORMANCES

FROM ONLY

BOTTLE OF SPIRIT 1.990,-

BEFFLAYER GIN, ABSOLUT VODKA, CHIVAS REGAL, JACK DANIELS, ETC.

HAPPY HOURS | DRINKS 50% OFF

EVERYDAY UNTIL 22:00

FREE TRANSFER  
+420 732 250 555

THE  
ONLY PLACE  
IN PRAGUE  
WHERE IT ROCKS  
ON SUNDAY



+350  
other  
party  
girls

**EVERY WEDNESDAY**  
YOUNG HOSTESS PARTY  
**EVERY THURSDAY**  
THE SHOWTIME PARTY  
**EVERY SUNDAY**  
VAGINA SCULPTURE PARTY

CENTRUM, VE SMEČKÁCH 32, PRAHA 1 | WWW.KABARET.CZ





**NON-STOP  
RELAX ANGEL  
MASSAGES:**

**TANTRA  
RELAX  
EROTIC**

**Adress: Nádražní 21, Prague 5  
(2.Floor)**

**Phone: +420 212 246 209**

**Mobile: +420 607 023 032**

**E-mail: relax-angel@seznam.cz**

**[WWW.MASSAGE-PRAGUE.COM](http://WWW.MASSAGE-PRAGUE.COM)**

**Young masseuses.**

**Sauna, jacuzzi.**

**Erotic massage in the jacuzzi!**

**Massage beds are heated!**

**Massage with hot stones!**

**Body to body massage!**

**Prices from 40 EUR**

**Escort at hotel**

## TIPS FOR RELAX



## LIVIA ESCORT

Phone: +420 728 675 947, 720 490 010  
www.liviaescort.cz

Gentlemen, in case visiting men's night clubs isn't your cup of tea (but you'd still like to have some fun), try Livia Escort - a 24 hour service, where the ladies come to you - either straight to your home or to a one-hour hotel. Livia Escort offers much more than regular escort services. If you have a long business trip ahead of you, why not enjoy the company of one of Livia Escort's ladies? You'll see that even work can be fun. This escort guarantee absolute discretion. Each girl offers a given range of services.



## NIGHT CLUB MOON

Karlovarská 48/10, Prague 6  
Phone: + 420 606 458 145  
www.nightclubmoon.cz

The MOON Night Club is located just about 8 kilometres from the AirPort, on ten direction to the centre of Prague. With the nice, discreet environment, young & beautiful girls, bar, Whirlpool and cheap prices, Moon Club is a must stop for anyone looking for a good night out in Prague. FREE WELCOME DRINK! FRIENDLY ENVIRONMENT! HIGH LEVEL OF SERVICE! CHEAP PRICES! BEAUTIFUL GIRLS! We look forward to seeing you at MOON Club!



## NURU HEAVEN

Španělská 4, Prague 2  
Phone: +420 722 405 529  
www.nuruheaven.cz

Newly opened luxury men's wellness club offers many kinds of sensual and erotic massages and for each of them you can choose one or more of professional masseuses. Specialty is the „Royal massage“ where you can enjoy oil and nuru massage with bottle of fine champagne and cheese varieties with fruits. 3 luxurious and spacious massage rooms equipped with heated mattresses on which you will be perfectly relieved. There are modern bathroom, high quality terry bathrobes and towels prepared for each client.



## U RŮŽE PRIVAT

Prague 1  
Phone: +420 605 183 004  
www.sex.cz/uruzepriyat

Do you have a desire to satisfy your needs? Your desires and fantasies will be fulfilled in U Růže Privat. It does not matter if you love tender love with kissing, 69 position, something more exciting, or lesbian show, which you can also join. The opportunity to join to the two girls is the dream of most men! Absolute discretion, comfort, quality, purity, solid negotiations, escort, it's all a matter of course. Selection of eight girls.

# Night Club Coctail Bar



**Entry  
free**



**35 girls  
every day**

Balbínova 733/21,  
Praha 2

Phone: 00 420 733 121 022  
100m from Venceslav square

**[www.neonclub.cz](http://www.neonclub.cz)**

## TIPS FOR RELAX



M11

## MASÁŽE LUXURY

Phone: +420 605 958 304, Koubkova 2, Prague 2, [www.masaze-luxury.cz](http://www.masaze-luxury.cz)

Are you tired after work and need to relax, eliminate stress and experience something unusual? Combine business with pleasure and indulge in erotic massage in Luxury. Massages are performed with hands and body in 3 comfortable rooms. Massaging is performed on the heated large massage pads 2 x 2 m. With the help of dim light, candle fire and relaxing music you will enjoy your massage for sure. SPECIAL OFFER! Bring your friend or colleague to massage and get a discount of 500 CZK.



M12

## HEAVEN MODELS

Náměstí míru, Prague 2  
Phone: +420 773 034 349  
[www.heavenmodels.cz](http://www.heavenmodels.cz)

Young, beautiful girls who love to use their freedom and your pleasure. In their arms there can be found tenderness, passion, but also purity and discretion. They aren't watching the clocks, because the erotic fondling and sex are fun for them. Every girl is a different erotic creation, and offers a variety of favors that you always agree in the room. You can visit them at their cozy nest or enjoy them in the comfort of your home or hotel.



M8

## DIAMOND GIRLS

Phone: +420 702 874 699, Seifertova 15, Prague 3, [www.diamondprague.cz](http://www.diamondprague.cz)

Discover the magic of luxury and taste the unbound erotic entertainment of Diamond club. You can expect the greatest comfort: nice Slovakian, Czech and Russian students, discreet environment, with superior quality, unique style, top service and access. You just need to visit the private flat to be personally persuaded. The choice of at least 5 beautiful girls and the best prices in the whole Prague – 1 hour 1300 CZK, 30 minutes 1000 CZK and escort service for 2000 CZK. 10 from 10 gentlemen can recommend the Diamond club, which is located near the Central Railway Station.



M8

## EXTASY CABARET

Chlumova 13, Prague 3 - Žižkov  
Phone: +420 222 780 048, 773 024 944  
[www.extasy.cz](http://www.extasy.cz)

Discover the island of luxury and comfort with beautiful and sexy young girls in continuous busy schedule. After calling the number 222 780 780 you will get a free ride to the club and back. The night club is fully air conditioned and has an over-filled bar. For owners of four-wheeled pets is the night club Extasy equipped with secure parking. You can also order the escort service.





EROTIC PARTIES,  
HOT GIRLS, MIXED DRINKS,  
DISCREET ENVIRONMENT

**OPEN DAILY**  
20:00 - 06:00

*Extasy*  
cabaret

Nejpohodovější noční klub

Extasy: Chlumova 13, Praha 3 [www.extasy.cz](http://www.extasy.cz)



**PRIVÁT U RŮŽE**

**HIGH LEVEL OF SERVICE**

**DISCRETION**

**PRIVATE APARTMENT**

**WE SPEAK ENGLISH**

**+420 777 054 399**

# Egyptian massages

A woman with long dark hair is the central figure, wearing a purple lace bra and matching underwear. She is looking down and to the right, with her right hand near her ear. The background is dark with some red vertical lines.

**Body-to-body  
massage**

**Nuru massage**

**Nuru massage**

**Tantra massage**

**Erotic massage**

**Escort Service**

**[www.erotik-massage-praha.cz](http://www.erotik-massage-praha.cz)**

**Contact us 24 h**

**728 219 076, 222 515 812, 774 593 651.**

**Slavíkova 19, Prague 2 – Vinohrady**

**Massaze: Non-Stop**

# IN WHICH CASES YOU HAVE TO BE !!!CAREFUL IN PRAGUE!!!



**P**rague is undoubtedly a beautiful city. It has a number of unique places where you can party all day and night. Complete paradise for tourists. And you know that paradise can easily become hell. Therefore, we bring you five tips on which cases you have to be careful.

## 1) Taxi drivers

This is the basis that applies absolutely in every big city. And Prague is not an exception. Of course, not every taxi driver is a thief. But as soon as a poorly paid driver (and it's not a dream job for sure) find a confused tourist, he immediately turns this opportunity to get some extra money from you. You should know that the whole city center takes just few kilometers and it's simply not possible that someone pays 800 CZK for the route from the Old Town Square to the Peace Square (náměstí Míru). For that kind of money you could get to town 20 minutes from Prague!

Always be careful and watch the taximeter and check the boarding amount. And now we are slowly getting to the point two.

## 2) Exchange offices

We can say that those are the taxi drivers in static booths. They are behind a Plexiglas and tastefully blabbering numbers you don't understand. Do not be lazy and find out the currency by yourself. You must be able to count a little and as a result

you can save a lot of money. If you are lazy to count, pull out a bank note and burn it. That will be the same effect as walking into the exchange office unprepared.

## 3) Small shops

There are a lot of small untrusted food shops in the center that value the goods 10 times more expensive than normal. Most of the time you can recognize them – they don't have price tags anywhere, their relatives fought in Vietnam War or they have contacts in Russia.

## 4) Around the Central Railway Station

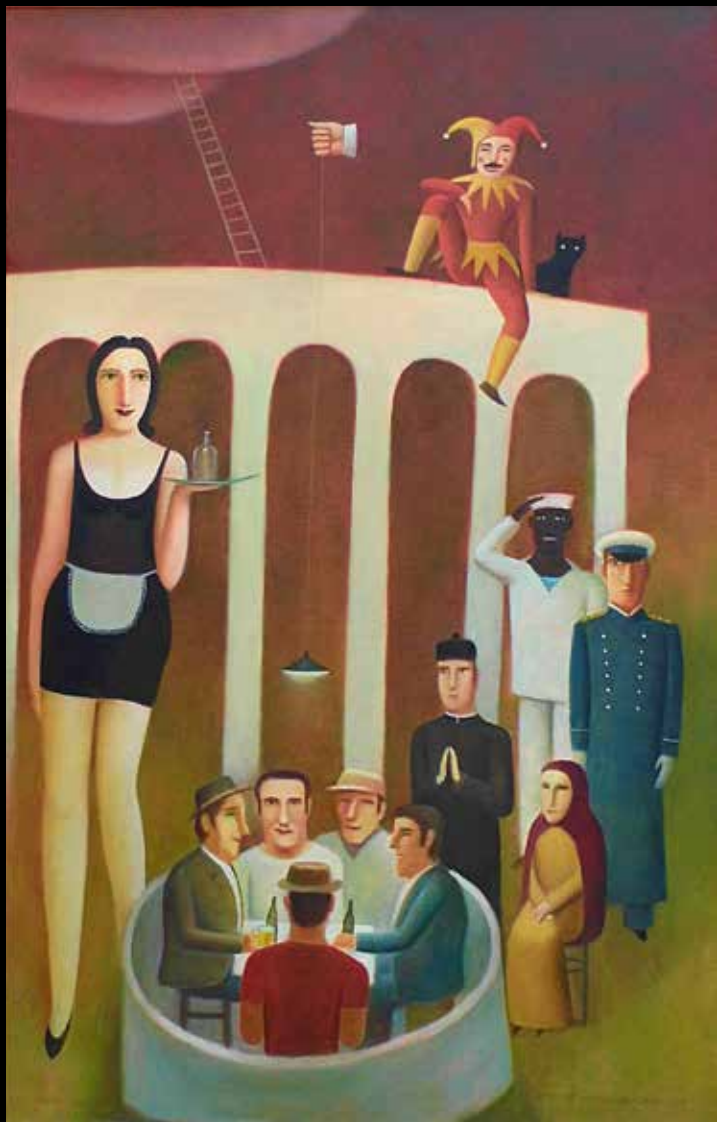
There are places where even a born and raised Prague citizen doesn't dare to go after dark. The situation of the Central Railway Station is desperate. Every day you can see dozens of dubious existences sitting on the benches and spending time by sipping wine from boxes or another cheap alcohol. Among the Prague citizens the park is nicknamed as Sherwood. And it has its modern Robins Hood. The difference, however, is that they take everything from everybody. And that means that the fifth point is ...

## 5) Pickpockets

Pickpockets are everywhere and especially in Prague they have developed their noses for tourists. So be careful not to give them too much smell.

th.





Alois Mikulka, Futile Persuasion of Masons, oil

GALERIE  
LA FEMME

**CZECH CONTEMPORARY ART**  
Bílková 2, Prague 1, info@glf.cz, www.glf.cz

# café Louvre

e s t . 1 9 0 2



**Where you have been  
making history.  
Already 111 years.**



**CAFÉ LOUVRE**, Národní třída 22, Praha 1, tel. 224 930 949  
cafelouvre@cafelouvre.cz, www.cafelouvre.cz