


# Bedeker **PRAGUE**

restaurant guide

**4.**  
2013  
FREE

*Everything You Always Wanted  
to Know About Prague\**

*(\*But Were Afraid to Ask)*

Tips for a Trips and Best **Beer!** 

Restaurants Cafés Hotels Culture Nightlife





THE RIGHT WAY TO SPEND YOUR NIGHT



KAROLÍNY SVĚTLÉ 37, PRAHA 1, 110 00

TEL.: 776 433 422

WWW.MYWAYCLUB.CZ

FACEBOOK: MY WAY



COME AND ENJOY THE BEST  
COCKTAILS IN PRAGUE

OPEN WED TO SAT: 18:00 - 02:00





# contents

## 8 facts & info

arriving, public transportations,  
history & the famous sites

## 18 culture & events

The most popular exhibitions,  
concerts and shows

Interview with Chris Hemsworth

## 30 service

Buy the ticket, rent a car or call  
nearest health emergency

## 36 hotels

Unusual accommodation in the  
city

## 38 gastro

Prague's bests restaurants and  
cafés  
Beer Tips

## 56 nightlife

Prague by night





## **MIRO Gallery**

### **The art of investing in lasting value**

**MIRO Gallery offers original works of contemporary artists as well as world classical artists: : Picasso, Chagall, Miró, Dalí, Braque, Degas, Warhol, Rodin, ...**

**We are looking forward to your visit**



MIRO Gallery, church of St. Rochus  
Head Office of the TREBBIA Foundation and MIRO Gallery  
Strahovské nádvoří 1/132, 118 00 Prague 1  
Tel.: +4 20 233 354 066, Fax: +420 233 354 075  
e-mail: [info@galeriemirot.cz](mailto:info@galeriemirot.cz)  
[www.galeriemirot.cz](http://www.galeriemirot.cz) [www.trebbia.eu](http://www.trebbia.eu)

# Bedeker **PRAGUE**

[ 6 ]



**bpmedia**

**BP Media, a.s.**  
**Ovenecká 28/364, Praha 7, 170 00**  
**[www.bp-media.cz](http://www.bp-media.cz)**

**EDITORIAL:**  
general editor: Tomáš Chvála  
editor: Milada Hrušková  
translation: Vo Anh Tuan

**DESIGN & LAYOUT:**  
BP-Media, a.s.

**SHOP ENSURES:**  
BP MEDIA A.S.

**ADVERTISEMENT ORDER:**  
Ivana Dufková  
[dufkova@bp-media.cz](mailto:dufkova@bp-media.cz)

Roman Sobota  
[sobota@bp-media.cz](mailto:sobota@bp-media.cz)

**DISTRIBUTION:**  
GRAND PRINC MEDIA, a.s.  
BP - Media a.s.

**COVER PHOTO:**  
[www.czechtourism.cz](http://www.czechtourism.cz)

Free distribution on selected places  
four times per year

Issue 4/2013 published: 18.10.2013

Registration: MK ČR E 19383

**SIMIX**<sup>®</sup>  
*motors*

## **RENT A LUXURIOUS LIMOUSINE HUMMER H 200!**

Hummer limousine H200 will surprise you with its uniqueness. Elegant, exciting design and above all spacious interior which provides comfort for up to 16 passengers throughout the journey. Take advantage of our exceptional offers to rent the car.

For more information call: +420 608 282 181

### **SHOWROOM**

V. P. Čkalova 22/784

160 00 Praha 6

mobile: +420 777 735 877

tel: +420 222 956 066

e-mail: [autosalon@simix.cz](mailto:autosalon@simix.cz)

Mon – Fri: 8:00 – 18:00, Sat: 8:30 – 12:00

### **CAR PARTS STORE**

Sekaninova 18/485

128 00 Praha 2

mobile: +420 602 203 575

tel: +420 261 214 535

e-mail: [simix@simix.cz](mailto:simix@simix.cz)

Mon – Thu: 8:00 – 18:00, Fri: 8:30 – 17:00



[www.simix.cz](http://www.simix.cz)

**For special  
occasions...**



# → WELCOME TO PRAGUE!



Welcome to Prague! Whether you've just landed, arrived by train, bus or car, we've got the allimportant low down on how to reach the city center using all the possible means of transportation, whether on a tight budget or otherwise.

## ↓ 1. ARRIVING IN PRAGUE BY PLANE

The airport is located on the northwest edge of Prague, some 20km (12 miles) from the city center. Although Prague boasts other, smaller airports, all international flights operate through Ruzyně. Important related phone numbers include +420 220 113 314 (general info), +420 220 116 072 (baggage claim) and +420 220 114 283 (lost & found).

### ↓ GETTING TO THE CITY CENTRE

If you've just arrived at the airport, getting downtown is generally, depending on the traffic, a matter of some 20 to 30 minutes (if you make use of a taxi or a shuttle service; see below), or 50 minutes if you use the cheaper yet convenient and comfortable public transportation.



Добро пожаловать в Прагу! Если вы только что приземлились, прибыли на поезде, автобусе или автомобиле, у нас есть все важные данные о том, как добраться до центра города, используя все возможные виды транспорта в зависимости от ваших средств.

## ↓ 1. ПРИБИТИЕ В ПРАГУ НА САМОЛЕТЕ

Аэропорт расположен на северозападной окраине Праги, приблизительно в 20 км от центра города. Хотя Прага может похвастаться другими, меньшими аэропортами, все международные рейсы осуществляются через аэропорт Рузине. Необходимыми телефонными номерами являются +420 220 113 314 (общая информация), +420 220 116 072 (багаж) и +420 220 114 283 (стол находок).

### ↓ КАК ДОБРАТЬСЯ ДО ЦЕНТРА ГОРОДА

Если вы только что прибыли в аэропорт, возможность добраться до центра города, как правило зависит от транспорта. Интервалы составляют от 20 до 30 минут (в том случае, если вы пользуетесь такси



# Galerie hlavního města Prahy City Gallery Prague

Jedinečná příležitost poprvé v historii zhlédnout  
unikátní prostory Colloredo- Mansfeldského paláce

For the first time in history, a unique chance to visit  
the original interiors of Colloredo-Mansfeld Palace

Palác Colloredo-Mansfeld  
Colloredo-Mansfeld Palace  
Karlova 189/2, 110 00 Praha 1

Otevřeno denně kromě pondělí 10-16 h  
Open daily except Mondays 10 a.m.-4 p.m.

ghmp

PRA  
PRA  
PRA  
PRA

HA  
GUE  
GA  
G

COLLOREDO  
MANSFELD



www.ghmp.cz

## ↓...BY PUBLIC TRANSPORTATION

Bus presents the cheapest way of reaching city center. It links the airport with the terminus of one of Prague's three subway lines. The drawback may be the fact that you need to buy a bus ticket, for which you'll need Czech crowns. Use the ATMs in the arrivals hall to get Czech crowns, rather than changing money at the overpriced exchange offices. You can either buy your ticket from the kiosk or the transport information desk in both arrival halls (open 7AM – 10PM), from the coin vending machines located right at the bus stop platform, or directly from the driver, although this will cost a couple extra crowns. The ticket price is 26 Czech crowns (1EUR / 1.3USD) for a transfer ticket that remains valid for the follow-up subway ride, or for a total of 75 minutes, plus an extra 13 crowns for larger pieces of luggage.

### BUS # 119

This will probably be most people's choice as the 119 provides the quickest connection to the historical center. Depending on the time of day, it runs every 7 to 20 minutes and gets you to the A line of Prague's subway. Hop on, remember to validate your ticket, and don't get off until the final stop (Dejvická). The subway entrance is just next to where you get off. The bus runs from 4:18AM until around 12:10 AM at night.

### BUS # 100

The 100 bus links the airport with the B-line of the Prague subway. Just get off at Zličín, the final stop. The 100 runs every 15 minutes throughout the day and every half hour after 7PM. The ride takes 15 minutes, but expect another 20 minutes

или трансфером, см. ниже), или 50 минут, если вы пользуетесь более дешевым и удобным общественным транспортом.

## ↓... НА ОБЩЕСТВЕННОМ ТРАНСПОРТЕ

Автобус представляет самый дешевый способ как добраться до центра Праги. Он связывает аэропорт с терминалом одной из трех линий пражского метро. Недостатком является то, что вам будут нужны чешские кроны, чтобы купить билет на автобус. Пользуйтесь банкоматами в зале прибытия, чтобы получить чешские кроны, а не менять деньги в обменных пунктах по повышенной цене.

Вы можете купить билет в киоске или в информационном бюро в обоих залах прибытия (работает с 7 утра до 10 вечера), из монетных автоматов, расположенных на автобусной остановке, или прямо у водителя, хотя это будет стоить пару дополнительных крон.

Цена билета с пересадкой составляет 26 чешских крон (1EUR / 1.3USD). Он остается в силе для следующей поездки метро - в общей сложности действителен в течение 75 минут. Для багажа больших размеров вы заплатите следующих 13 крон. Обратите внимание на то, что торговые автоматы и шоферы не принимают иностранную валюту. Автобус удобный, чистый и безопасный способ сообщения с центром Праги для тех, кто хочет экономить. Однако, автобус может быть довольно переполненным в часе пик!

### АВТОБУС № 119

Вероятно, большинство людей выберет автобус № 119, который обеспечивает быструю связь с историческим центром. В зависимости от времени суток, он ездит каждые 7 - 20 минут и соединяет пассажиров с линией пражского метро. Садитесь на автобус и не забудьте закомпостировать свой билет. Поезжайте до конечной станции метро Дейвица. Вход в метро находится

Fashion Therapy  
NEWLY OPENED

ANTONY  
MORATO

**MET**

Fashion Therapy  
Národní 37,  
Pasáž Platýz

Po-pa 10-19  
So-ne 11-19

**FACTS & INFO**

of subway ride if you're aiming to reach the city center afterwards by metro. The bus runs from 5:30AM until around 11:50 PM.

**AIRPORT EXPRESS BUS**

The Airport Express bus service links the airport with the Hlavní nadrazi train station; it runs every half hour and the ride takes 40 minutes. Although part of Prague's public transportation system, special fares apply: tickets can be purchased solely from the driver and run for 50 crowns (with no extra luggage fees). The AE runs from from 5:00AM to 10:00PM.

**TRAVELLING AT NIGHT**

If you want to use the public transportation at night, look out for the # 510 bus, operating between midnight and 3.30AM and linking the airport with the tram at Divoka Sarka. From there, take the tram # 51 to the city center. Note that the night bus runs every 30 minutes.

**↓...BY SHUTTLE**

Various companies run shuttle door-to-door services, or drop you off at the city center. They are generally priced lower compared to taxis, and can be easily found outside the terminals. The CEDAZ minibus shuttles run every half hour and costs 120 crowns per person, dropping you off at the city center. The service operates between 5:30AM and 9:30PM. CEDAZ will also drive you directly to any given address, but you need to pre-book (call +420 220 116 758 or go to [www.cedaz.cz](http://www.cedaz.cz)). Other shuttle services include Prague Airport Transfers who accept credit cards ([www.prague-airport-transfers.com](http://www.prague-airport-transfers.com)).

рядом с местом, где вы будете выходить из автобуса. Автобус курсирует с 4ч. 18мин. утра примерно до 00 ч. 10 мин.

**АВТОБУС № 100**

Автобус № 100 соединяет аэропорт с линией Б пражского метро. Выйдите на конечной остановке Зличин. Автобус № 100 ходит каждые 15 минут в течение дня и каждые полчаса после 7 часов вечера. Поездка продолжается 15 минут, но вас ждет еще 20 минут езды на метро, если вы на нем собираетесь добираться до центра города. Автобус курсирует с 5ч. 30мин. утра примерно до 23ч.50мин. ночи.

**АВТОБУС AIRPORT EXPRESS**

Автобус Airport Express (AE) связывает аэропорт с Главным вокзалом (Hlavní nadrazi). Он ездит каждые полчаса, и поездка длится 40 минут. Хотя AE является частью системы общественного транспорта Праги, здесь применяются специальные тарифы: билеты можно приобрести только у водителя и в цене 50 крон (без дополнительной оплаты за багаж). AE ездит с 5ч. утра до 10ч. вечера.

**НОЧНЫЕ РЕЙСЫ**

Если вы хотите использовать общественный транспорт в ночное время, обратите внимание на автобус № 510, который ездит между полночью и 3ч. 30мин. утра и связывает аэропорт с трамваем на остановке Дивока Шарка (Divoka Sarka). Оттуда добирайтесь на трамвае № 51 до центра города. Обратите внимание - ночной автобус ходит каждые 30 минут.

**↓..НА МАРШРУТНОМ ТАКСИ**

Различные компании используют челночное сообщение „от двери до двери ... или высаживают вас в центре города. Их цены, как правило, ниже, чем в такси, и такой тип такси можно легко найти за пределами терминалов. Челночные микроавтобусы CEDAZ ходят каждые полчаса, и проезд в центр города стоит 120 крон на человека. Микроавтобус курсирует с 5ч.30мин. утра до 9ч.30мин. вечера. CEDAZ вас также отвезет по любому заранее



## ↓...BY TAXI

Prague taxi drivers are notorious for overcharging tourists. Generally, you should be on the safe side with the fleet of AAA-labelled taxis waiting in front of the terminal. The ride will cost around 500 – 700 crowns. Don't shy away from contacting a competing company, but make sure to always check the price beforehand, whatever company you've chosen! You shouldn't ever have to pay over 900 crowns.

или посетите [www.cedaz.cz](http://www.cedaz.cz)). Другие услуги включают трансфер из Аэропорта Прага, где принимают кредитные карты ([www.prague-аэропорт-transfers.com](http://www.prague-аэропорт-transfers.com)).

## ↓... НА ТАКСИ

Пражские таксисты известны своим обчитыванием туристов. Поэтому на всякий случай пользуйтесь такси с надписью AAA, ожидающих перед терминалом. Поездка будет стоить около 500 - 700 крон. Не бойтесь воспользоваться услугами конкурирующих компаний, но заранее убедитесь в цене. Независимо от компании, которую вы выбрали, вы никогда не должны платить более 900 крон.



## ↓2. ARRIVING IN PRAGUE BY TRAIN

International trains arrive at the central station, Hlavní nádraží, often referred to as Praha hl.n. The station is directly connected with Prague's subway system and located right in the city centre. If arriving after dark, we highly recommend hopping on the subway (remember to buy a ticket) rather than walking out and through the surrounding park. Most of the station itself has just been refurbished and boasts a modern look with plenty of kiosks, drug stores and fast-food joints.

## ↓2. ПРИЕЗД В ПРАГУ НА ПОЕЗДЕ

Международные поезда прибывают на центральную станцию, Hlavní nádraží, часто называемую Praha hl.n. Станция непосредственно связана с пражским метро и расположена в самом центре города. Если вы прибываете после наступления темноты, мы настоятельно рекомендуем вам ехать на метро (не забудьте купить билет) и не проходить через окружающий парк. Большая часть самой станции только что была отремонтирована и может похвастаться современным видом с множеством киосков, аптек и ресторанов быстрого питания.

### 3. ARRIVING IN PRAGUE BY BUS

Florenc is the central bus station; located in the city centre, it is also directly adjacent to Prague subway's station Florenc (a transfer station between the lines C and B). Like the central train station, Florenc has recently undergone a major facelift and now boasts a pleasant and clean arrivals & departures hall with kiosks and fast-foods (Burger King, anyone?), and most importantly a big screen showing the bus times and the respective platforms.

### 3. Приезд в Прагу на автобусе

Флоренц не только является центральной автобусной станцией, расположенной в центре города, но и в непосредственной близости от пражской станции метро Флоренц (переход между линиями С и В). Как и центральный железнодорожный вокзал, станция Флоренц недавно подверглась значительной реконструкции и теперь может похвастаться приятным и чистым залом приездов и отъездов с киосками и ресторанами фаст-фуд (желаете Burger King?), а самое главное - большим экраном с отъездами и приездами автобусов и с указанием соответствующих платформ.



### 4. ARRIVING IN PRAGUE BY CAR

Prague falls victim to traffic jams and a lack of legal parking spaces (streets with blue-marked areas on the side are reserved for residents and you run the risk of having your car towed if you park there). This is why we recommend using the so-called P+R's (park and ride) parking places, situated near all highways. Find more info at [www.dpp.cz/en/parking](http://www.dpp.cz/en/parking).

### 4. Приезд в Прагу на автомобиле

Прага становится жертвой пробок и недостатком законных парковочных мест. Улицы с полосой синего цвета на стороне означают области зарезервированные для жителей. В этом случае вы рискуете, что ваш автомобиль будет отбуксирован при паркинге. Именно поэтому мы рекомендуем использовать так называемые стоянки парк анд райд (P + R) - парковочные места, расположенные вблизи всех магистралей. Более подробную информацию найдете на [www.dpp.cz/en/parking](http://www.dpp.cz/en/parking).

## PRAGUE'S PUBLIC TRANSPORTATION SYSTEM

Prague's public transportation system is generally reasonably clean, very efficient, runs on time, and its network spans the whole city; with the price of 32 CZK for a transfer ticket (1EUR / 1.3USD), it cannot be beat. If you don't need to venture out of the center, you can confine to using the subway (or metro, as it's called here) and trams; buses service the further-away neighbourhoods. Let's look more closely at the various tickets you can purchase.

Tickets can be bought from the numerous vending machines in all the metro stations and at many tram stops (always keep coins at hand), or from most tobacco stores / kiosks.

**24-hour pass:** 110 CZK  
**3-day pass:** (72 hours): 310 CZK

### ONE-OFF TICKETS

30 min. / 5 stops / no transfer ticket: 24 CZK, 90 min. transfer ticket: 32 CZK

Remember to validate your ticket upon first entering the metro / boarding a tram or bus. (i.e. slip the ticket into one of the yellow boxes and wait for the info to be stamped on it).

For more information about Prague Public transport visit [www.dpp.cz](http://www.dpp.cz) or call the free info line 296 191 817.

## СИСТЕМА ОБЩЕСТВЕННОГО ТРАНСПОРТА В ПРАГЕ

Общественный транспорт в Праге, как правило, достаточно чистый, очень эффективный и точный. Его сеть охватывает весь город. Цена билета 32 крон за поездку с пересадкой (1EUR / 1.3USD) очень выгодна. Если вам не надо выходить из центра, вы можете ограничиться метро и трамваями. Автобусы следуют в окрестности города. Давайте более внимательно рассмотрим различные

типы билетов, которые можно приобрести. Билеты можно приобрести в многочисленных торговых автоматах на всех станциях метро и на многих трамвайных остановках (всегда имейте при себе монеты), или в большинстве табачных магазинов или киосков.

**Суточный билет (24 часа):** 110 крон  
**Трехдневный билет(72 часа):** 310 крон

### РАЗОВЫЕ БИЛЕТЫ

30 минут / 5 остановок / без пересадки: 24 крон  
90 минут /с пересадкой: 32 крон

Не забудьте закомпостировать свой билет при первом входе в метро, в трамвай или в автобус. (т.е. вложите билет в одну из желтых коробок и подождите пока билет не будет закомпостирован). Для получения дополнительной информации о пражском общественном транспорте посетите [www.dpp.cz](http://www.dpp.cz) или информировуйтесь по телефону на бесплатной линии 296 191 817.

ANTIQUE  
U UHELNEHO TRHU

CZECHOSLOVAKIA GSSR PROOF COMMEMORATIVE AND ANNUAL COINS

Skořepka 8, 110 00 Prague 1, Czech Republic  
tel: +420 224 234 696  
opening hours: Mo - Sa 10:00 - 18:00  
[www.numismatik-mince.cz](http://www.numismatik-mince.cz)

## FACTS &amp; INFO

For over 1000 years, Prague has served as the political, cultural and economic centre of the Czech state. Having been the seat of two Holy Roman Emperors during the gothic and renaissance periods, it also had the status of the Holy Roman Empire capital. Prague's history commenced in the year 870, although evidence shows the area had been inhabited since the Stone Age. The city flourished during the 14th century, under the reign of King Charles IV, who, among other deeds, ordered the building of the famous Charles Bridge or Saint Vitus Cathedral, the oldest gothic cathedral in central Europe, and Charles University, the oldest university in central Europe. Prague was then the third-largest city in Europe. Now home to some 1.2 million inhabitants, Prague became the capital of the newly set up Czechoslovakia in 1918, with the end of WW I and the dissolution of the Austro-Hungarian Empire. In 1992, Prague's historic center became a UNESCO world heritage site, and is currently one of the world's most popular tourist destinations.

На протяжении более 1000 лет, Прага служит политическим, культурным и экономическим центром чешского государства. Она была пристольным городом двух императоров Священной Римской империи в готическом периоде и в эпохе Возрождения. Прага также имела статус столицы Священной Римской империи. История Праги началась в 870г., хотя есть сведения о том, что область была населена с периода каменного века. Город процветал в течение 14-го века, во времена правления короля Карла IV, который, наряду с другими проектами, приказал построить знаменитый Карлов мост, кафедральный готический собор Святого Вита, и Карлов университет - старейшие постройки в Центральной Европе. В то время Прага была третьим по величине городом Европы. Сейчас здесь проживает около 1,2 млн. человек. После окончания Первой мировой войны и распада Австро-Венгерской империи в 1918 году Прага стала столицей вновь созданной Чехословакии. В 1992 году исторический центр Праги стал принадлежать к Всемирному наследию ЮНЕСКО, и в настоящее время является одним из самых популярных туристических мест в мире.





## Indoor Go-Kart arena

PKA - Prague karting arena's raceway at Letnany, North Prague, is an excellent venue for individual drivers, private groups and corporate events. With its superb racing facilities and catering services, state-of-the-art race computer systems, multilevel track with 15 meters long bridge and fleet of expertly prepared karts, you can be assured of the thrills of wheel to wheel action that Karting in PKA provides.

PKA is widely recognised as the founder of modern go kart racing for teenagers & adults in Prague and have been at the forefront of indoor go Karting since 1999, developing the sport into one of the most exciting and accessible forms of motor racing today.

Indoor go Karting is not only a thrilling experience, but also great fun, and whether you are a novice or a potential Formula 1 driver, you will find that PKA's fast and furious go Karting race sessions are geared up to give you an adrenalin-filled event to remember!

The track is open all the year from Monday to Friday from 14.00 to midnight and from 10.00 am until midnight on Saturdays and Sundays.

They can be found on crossroads of Toužimská and Ašská street in Prague 9 - Letnany. You can use bus number: 158 from terminal station of Metro (underground) line "C" to station "Stare Letnany" it takes four minutes.

For reservations  
call: +420 777 311 856  
or visit [www.praguekartingarena.com](http://www.praguekartingarena.com)

# PRAGUE KARTING ARENA



# GO-KART

**INDOOR ARENA**

**Thrilling 600 meters long track with breathtaking 15 meters long bridge with special asphalt concrete illuminated with power LED technology.**  
**12 fast Subaru 7hp go karts with computerized scoring system.**  
**100 seats in bar-restaurant with the whole track view.**  
**Easily accessed from the City centre by subway line „C”.**

**Special prices for stag and hen party groups !**

**Call +420 777 311 856 for reservation !**

## HOW MANY PEOPLE...

**L**ife is like a box of chocolates. And this time, we present you with a rich cultural service that will satisfy even the most demanding.

First of all – the wait is over! It took over 20 years, but finally Arnold and Sly are meeting as the protagonists of a movie. Better late than never. It is still the same treat to the fans, even though the gentlemen have a lot of wrinkles on them now. Revival of 80s action genre is not your cup of tea? Then we suggest the sequels of Hunger Games and Thor, the masturbating dramedy Don Jon or the unpredictable girl Carrie.

In our popular cultural thirteen, we of course didn't forget the music lovers. And there is a lot to choose from! In the following months, coming to concert in the Czech Republic are Natacha Atlas, Elton



John, Bruno Mars or the band Nickleback. So, do we have your attention now? Read and choose well!

*Tomáš Chvála*

## ESCAPE PLAN

ACTION / THRILLER, USA, 2013  
 DIRECTOR: MIKAEL HÄFSTRÖM  
 STARS: SLY STALLONE, ARNOLD SCHWARZENEGGER, J. CAIVEZEL  
 RELEASE DATE: 17.10.2013

The classics Sylvester Stallone and Arnold Schwarzenegger caught a second wind in their old age and are filming one film after another. This time, they will take us into an

ultramodern prison, from which Sly should, as an expert on correctional facilities, escape. But someone crosses him and a pretense escape turns into a real fight for life. Fortunately, Arnie is also in jail, and he knows how to handle other people. An honest action movie with honest action heroes. What more is there to want? Only Bruce Willis is missing. Well, he can't be everywhere.



## DON JON

COMEDY / DRAMA, USA, 2013  
DIRECTOR: JOSEPH GORDON-LEVITT  
STARTS: J. GORDON-LEVITT, SCARLETT JOHANSSON, JULIANNE MOORE  
RELEASE DATE: 17.10.2013

The plot of the following comedy will be familiar to a much larger percentage of men, than would truly admit it: Dramey Don Jon is a movie about a young man (Joseph Gordon-Levitt) from New Jersey, whose internet porn obsession is keeping him from establishing real relationships. Friends call him Don



Although the Stephen King novel adaption from 1976 is often touted a classic, after all – regarding the approach to the original – there are many holes (director Brian De Palma never hid that he was more

## MACHETE KILLS

ACTION / COMEDY, USA, 2013  
DIRECTOR: ROBERT RODRIGUEZ  
STARS: DANNY TREJO, MEL GIBSON  
RELEASE DATE: 24.10.2013

Is back! And again, he will make a hell of a mess. A hectic sequel to the blockbuster Machete, in which Danny Trejo executed everything that came into his way (including Steven Seagal) with an elegance of his own, brings an even more stacked cast. Except for the returning survivors from the last movie,



Jon, because no woman can resist him, but he gets off far more on watching porn. Will it last? Tough to say. He is being seduced by beauties Scarlett Johansson and Julianne Moore.

## CARRIE

DRAMA / HOROR, USA, 2013  
DIRECTOR: KIMBERLY PEIRCE  
STARS: CHLOE MORETZ, J. MOORE  
RELEASE DATE: 17.10.2013

interested in the slaughter and terror, than devoting himself to the characters). Remake of Carrie is thus no loss, double so, if directed by Kimberly Peirce (excellent drama Boys don't cry) and the main character played by the talented Chloe Moretz a.k.a. Hit-Girl from the blockbuster Kick-Ass.



the audience can now look forward to Mel Gibson as a bad guy, singer Lady Gaga and a president played by Charlie Sheen, who, for the first time career, is acting under his birth name Carlos Estevez. Cool!

## NATACHA ATLAS

P ALÁC AKROPOLIS, KUBELÍKOVA 27,  
PRAGUE 3, PRICE: 650 Kč, 1.11.2013

Natacha Atlas has long overpassed the tag „voice of Transglobal Underground” and in the last years, she is breaking out from the ethnic dance fusions box. She unites Near Eastern music with European and delicately mixes Arabic practice with „western” songwriting, elements of jazz and the legacy of European classic. This time, we will meet her in a different mood than during last



visits. An acoustic concert will be a part of the Top Of The World cycle.

## BRUNO MARS

02 ARENA, PRAGUE 9  
PRICE: 990 - 1390 Kč, 6.11.2013

Bruno Mars has so far pleased his fans with two regular albums so far. Doo-Woops & Hooligans from 2010 was touted „debut pop album of the year: 10 almost perfect songs” by the Rolling Stone magazine. In 2011, Mars was named one of the 100 most influential people in the world in a poll by Time magazine and since then, he has remained on the top of the music industry. At his concert in the Prague 02 arena, he will naturally present his grandest hits and a relaxed atmosphere, appropriate for his music.



## NICKLEBACK

02 ARENA, PRAGUE 9  
PRICE: 990 Kč, 7.11.2013



Since the first Spider-Man movie by Sam Raimi, Nickelback will always be linked with the astonishing song Hero. The band isn't just a one-hit wonder, however (among others, they have been nominated for an Grammy 5 times). In the year 2011, they enriched their repertoire with the successful album Here and Now, which they supported on their sold-out European tour. Now they are returning to Europe and this time (for the first time in the career), and they are finally headed to the Czech Republic! Well, took them long enough.







# elton john

& his band

18.12.2013 Praha O<sub>2</sub> arena



Vstupenky ve sběrnách SAZKA sázková kancelář, a.s., [www.sazkaticket.cz](http://www.sazkaticket.cz)



[eltonjohn.com](http://eltonjohn.com)



## THOR: THE DARK WORLD

ACTION, FANTASY, USA, 2013

DIRECTOR: ALAN TAYLOR

STARS: CHRIS HEMSWORTH, NATALIE PORTMAN, TOM HIDDLESTON

RELEASE DATE: 7.11.2013

The Asgard god of thunder Thor returns with his mighty hammer (not a sexual allusion) to once again establish order on Earth and take his beloved Natalie Portman to meet his parents. However, keeping peace in the whole universe is not an easy task at all, and double so, if you encounter a friend, whose

If you are a fan of peculiarity and originality, you must surely know the London trio Placebo, belonging to the top of the alternative scene. This month, specifically 16th of September, the group releases a new album, first in 4 years. And the Prague concert fits beautifully with this. It will, aside from the new songs from Placebo, include material from preceding albums, whose sales topped 12 millions worldwide.

## NICK CAVE & THE BAD SEEDS

TIPSPORT ARENA, PRAGUE 7

PRICE: 1350 - 2500 Kč, 22.11.2013

Nick Cave is not unknown to Czech audiences – since the beginning of the 90s he has performed regularly at concerts in the Czech Republic. This time, Nick Cave and the Bad Seeds will introduce their 15th album *Push the Sky Away* at their Prague concert in the Tipsport arena. The album came out this



only goal is total mayhem. At such times, you could use even a traitor in the fight – for example brother Loki (Tom Hiddleston), who caused a lot of trouble to Thor (and the whole universe) in the first movie.

## PLACEBO

LUCERNA - VELKÝ SÁL, PRAGUE 1

PRICE: 1190 Kč, 13.11.2013



February and received enthusiastic reviews. „This album seems just new to me, you know, but new in an old way” claims Cave cryptically about the album. The fans can also look forward to the newest hits.



## THE HUNGER GAMES: CATCHING FIRE

SCI-FI / ACTION, USA, 2013  
DIRECTOR: FRANCIS LAWRENCE  
STARS: JENNIFER LAWRENCE,  
RELEASE DATE: 21.11.2013



Hunger Games have been taking place for a full 75 years now and they allow president Snow to pull the correct strings and sow fear into the hearts of the whole society. But oh, the people are starting to revolt and they understand that

true power is actually in different hands. And the last seed, which might sprout into a rebellion, is Katniss (Jennifer Lawrence). The blockbuster sequel will again put a party of young murderers into the arena. Entertainment guaranteed.

## TRANSMISSION 2013

O2 ARENA, PRAGUE 9  
PRICE: 1150 - 2900, 30.11.2013

It's been a long time since the first edition of Transmission was organized. During the past ten years, this music event earned a legendary position with the fans. The organizers managed to make the impossible possible. Now it's time for the largest Transmission in history with a special anniversary surprise. A brand new and original Transmission experience. Prepare yourself for the 10th edition, because of which you will dance through your shoes. We guarantee it.



## ELTON JOHN

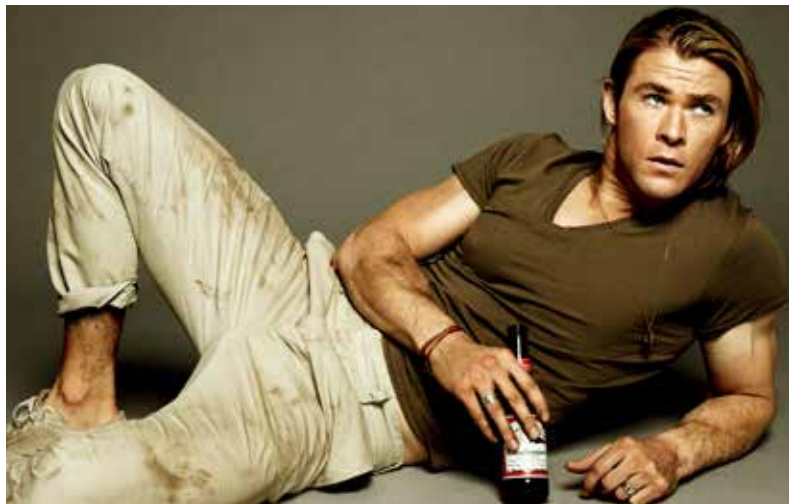
O2 ARENA, PRAGUE 9  
PRICE: 1390 - 2590 Kč, 18.12.2013



One of the most successful solo artists in the history of popular music will spice the pre-Christmas period for the lovers of pop in the O2 arena. He has a star on the Hollywood Walk of Fame, was named a Commander of the Order of the British Empire, his wax statue is in the London collection of Madame Tussaud, is openly homosexual and wrote the Oscar-winning song to the animated blockbuster Lion King. Elton John is simply a worldwide name and no fan should miss his December concert.



## CHRIS - „THOR“ HEMSWORTH INTERVIEW



**T**he Asgard god returns and with him the charismatic Chris Hemsworth, who recently also managed to shine as James Hunt in the biographical drama *Rush*. Probably all of us would however agree that the hammer in his hand suits him best. And it is for the sequel *Thor: The Dark World* that our reporter Michael Liška prepared an interview with Chris.

**Chris, what is your relationship with Thor?**

I really like that character. The trick is to always find a new way to transform the character compared to the last movie. I think we need to ensure that our hero is active in the plot from the beginning of the movie, as compared to him just chipping in at the end. He needs to be solving

the plot for the whole time. Thor is torn about where his place is. Is it on Earth with Jane or on Asgard, and who should he be loyal to? At the same time, he begins to understand the dark side of being king.

**So that's the reason for the subtitle *The Dark World*?**

I think that Alan (director of the movie *Alan Taylor*, editor's note) also wanted to imply that Thor is moving to adulthood through a rather dark path. He is forced to think very politically with respect to his maturity and the secrets he is uncovering about what the people of Asgard and the universe really need to know, and what they want to know.

**What about Loki and Thor?**

In the first movie, Loki and Thor



were friends and their adversity wasn't that large. This time it's different. Thor and Loki are examining what's really going on and what was the reason they are in such a situation. And this works also thanks to Tom (Hiddlestone, editor's note). Tom gives Loki a whole new dimension.

The audience loves the character. He approached it so that the audience is torn apart. He is a bad guy, but we also somehow like him. Each time you manage to accomplish this, the end result is much more interesting. Many of my favorite scenes from all the movies we've shot so far are with Tom.

**It is just me, or does Marvel Studios really listen to fans and comes out to meet them?**

Not just you. The fans are really supportive of us and I love them for this. From the very beginning, we tried to hold on strong to the style of the original comics. Our characters already existed and had fans that knew them better than we did. You don't want to disappoint anybody in this way.

**How was working with A. Taylor?**

Alan has a great sense for the story and a need to hold on to reality, he doesn't want anything absurd. I think that similarly to the Game of Thrones, even in the most mythical moments we keep ourselves down to earth. Asgard has the vibe of a real city, not just a set. It gives the impression that it has been settled for a long time.



## Prague Towers

The Petřín Observation Tower  
The Mirror Maze on Petřín Hill  
The Town Belfry by St. Nicholas' Church  
The Powder Tower  
The Lesser Town Bridge Tower  
The Old Bridge Tower

## Пражские башни

- 1 Петршинская обзорная башня
- 2 Зеркальный лабиринт на Петршине
- 3 Городская колокольня Святого Николая
- 4 Пороховая башня
- 5 Малоостранская мостовая башня
- 6 Староместская мостовая башня

**Open daily / Открыто ежедневно**

November – February / Ноябрь – Февраль: 10:00–18:00, March / Март: 10:00–20:00  
April – September / Апрель – Сентябрь: 10:00–22:00, October / Октябрь: 10:00–20:00



[www.muzeumprahy.cz](http://www.muzeumprahy.cz)

# INTERVIEW: Vlastimil Musil

**H**e has devoted already three decades to the processing of the Bohemian garnet. Jewel production has become a nearly lifelong fulfilment of his interests. You will easily notice his love for the craft when engaged in a conversation with him; even after such a long time his eyes are not void of spark when he talks about garnet. And he also has a weakness for tie-pins and cufflinks. All of this is commercial and marketing manager of the Granát Turnov cooperative, Vlastimil Musil.

**Christmas is approaching. Is that of any importance in relation to Bohemian garnet?**

You would be surprised! It is of course a favourite Christmas merchandise, and let's be honest, often even a grateful gift to buy in the nick of time. I am sure we have saved more than one marriage at Christmas, helping husbands out of a tight spot at the last minute (laughing). On a more serious note, Bohemian garnet is a beautiful gift and so we are usually rushed off our feet during Christmas.

**In what lies its uniqueness?**

Bohemian garnet is unique because of its originality and its blood-red colour. As it is being mined and processed in Czech Republic, it has become our national tradition and national wealth.

**How does Bohemian garnet fare in the world?**

Our cooperative has customers all over the world from the United States across Europe to Japan. Jewels with Bohemian garnets are very popular with tourists or foreign customers.

**Why would you recommend the Bohemian garnet?**

A customer who buys an original jewel with Bohemian garnet chooses the right

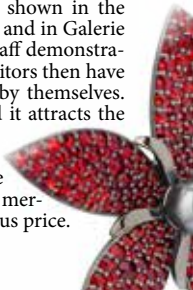
option. He buys something original, he buys a gift or a jewel with direct connection to the visited country and while wearing this jewel he will often remember the pleasant moments spent in Prague, or other Czech city, long after his visit.

**How does one recognize the Bohemian garnet?**

Jewels with Bohemian garnets have distinctive properties and shape. As the stones in question are very small, the jewel is characterised by a large field of small, blood-red stones. Their size varies from about 2.5 to 5 mm. The original jewels come with a genuineness certificate, which has a holographic logo of our cooperative and is made under the trademarks of Bohemian Garnet and Granát Turnov. Each jewel has a hallmark in the shape of the letter G.

**You even run a museum of Bohemian garnet in Trutnov. What all does it offer?**

One can familiarise himself with the history of both mining and processing of the Bohemian garnets. On top of that this year we celebrate 60 years of this tradition. The making of the garnet jewels and demonstrations of the cutting of the Bohemian garnet are shown in the museum, customer centre and in Galerie Granát. Our specialised staff demonstrates these processes and visitors then have the opportunity to try it by themselves. It is really fascinating and it attracts the attention of many visitors. Then there are our shops on the ground level, where tourists can purchase our merchandise at an advantageous price.





Granát, artistic manufacturing cooperative, Turnov The manufacturer of the traditional jewelry from Bohemian garnet. The biggest collection with modern design patterns. The only owner of a Bohemian garnet strip mine.

Shops: Praha 1, Dlouhá 28 a 30 - Praha1, Panská 1 - Praha 1, Pánská pasáž,  
Na Příkopě 23 - Turnov, nám. Českého ráje 4 - Liberec, Pražská 502/3 - České  
Budějovice, Dr. Stejskala 9 - Český Krumlov, Latrán 53

[www.granat.cz](http://www.granat.cz), [www.granat-shop.cz](http://www.granat-shop.cz)



## PYLONES DESIGN SHOP

28.října 376/11, Prague 1  
Phone: +420 224 211 100  
www.pylones-eshop.cz

**M7**

PYLONES designs, manufactures and retails a range of beautifully designed household objects which are fun, colorful and affordable. By producing its own-label products in the company's distinctive packaging, PYLONES offers its customers an ideal gift-shopping experience. With a range including kitchen instruments, bathroom accessories, office supplies, baby gifts, jewellery, stationery and personal accessories, every product is designed and produced exclusively for PYLONES.



## GRANÁT TURNOV - ГРАНАТ ТУРНОВ

Dlouhá 28 - P-1, Pánská pasáž - Na  
Příkopě 23 - P-1, Panská 1/892 P-1

В этом году кооператив художественного производства „Гранат Турнов“ отмечает 60 – летнюю традицию производства украшений с чешскими гранатами в г. Турнове и в Чешской Республике. „Гранат Турнов“ в настоящее время является самым большим производителем украшений с чешскими гранатами. Чешские гранаты известны во всем мире. Если вы желаете купить или просто увидеть различные драгоценные камни, посетите три наши магазины в самом центре Праги.



## PALLADIUM

Náměstí Republiky 1079/1a  
Prague – Nové město  
Phone: +420 225 770 250,  
www.palladiumpraha.cz, www.  
facebook.com/palladiumpraha.cz

**M7**

Palladium is a modern shopping center with a widest range of stores, restaurants and services within the historical part of Prague. In five floors, visitors can find almost 180 stores, 20 restaurants, coffee bars and bars and in the ground floor, almost 900 parking places. A sensitive combination of historical features with a modern architecture creates an unique atmosphere, which makes from shopping a real experience.



## OUTLET USA

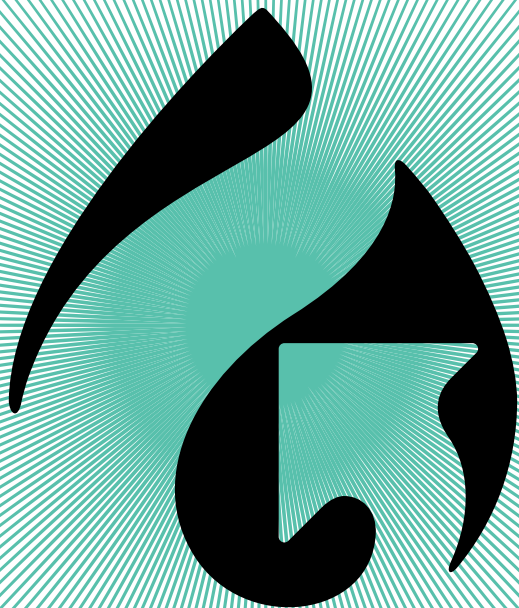
Revoluční 30, Prague 1  
Phone: +420 608 253 981  
www.Outlet-usa.com

**M7**

If you come into Prague not just for delights, but as well for shopping, then visit Outlet USA, especially if you are lovers of designer clothing. Only with many difficulties, you'll find a better shop in Prague with brands as Ralph Lauren, Tommy Hilfger, Ed Gardy, Guess, Abercrombie & Fitch, Nautica, Roxy or Billabong or Calvin Klein and all of this just in one place and for very reasonable prices.

# GROWCITY.CZ

BIGGEST  
CITY IN  
EUROPE



**SPECIALIZED GROW CENTRUM FOR INDOOR AND OUTDOOR**

**UNIQUE CONCEPT ON 3500m<sup>2</sup>**

LEADING TOP 20 BRANDS | MORE THAN 5000 ITEMS ON STOCK | SHOWROOMS OF BEST COMPANIES | PROMO EVENTS | EDUCATIONAL SEMINARS | SPECIAL DISCOUNTS FOR FOREIGN VISITORS | FREE SEEDS ACTIONS | LOW PRICES | ALL IN ONE HOUSE

OPEN : MO-SA 10:00-18:00 AREAL LETNANY BUSINESS PARK - BERANOVÝCH 65 - PRAHA 9

**WWW.GROWCITY.CZ**



**PLAGRON**  
*grows green*

**GIB LIGHTING**



**CANNA**  
The solution for growth and bloom



**Can-Editors**



**ONOPTIKUM**



**ATAMI**  
NATURALLY INNOVATING



**Soft Secrets**



**BIOBIZZ** | WWW.BIOBIZZ.COM



## SERVICE

## Alimex ČR

It offers car delivery to anywhere in Prague within 30 minutes, and delivery to anywhere in the Czech Republic within 90 minutes, or with rentals exceeding 10 days, for free. Seven hundred cars in various categories are at your disposition. Operating leases are also an option.

**Rate: 300–1500 CZK/day.**  
**Aviatická 1048, Prague-Ruzyně,**  
**Phone: 220 114 860, [www.alimex.eu](http://www.alimex.eu).**

## A-Rent Car

Discount rates are provided for medium and long-term rentals. Immediate vehicle replacement in the case of a breakdown or accident is guaranteed. The rented vehicle may be returned to any of the rental locations at no extra charge.

**Rate: 1300–4415 CZK/day.**  
**V Celnici 10, Prague 1,**  
**Phone: 224 211 587,**  
**[www.arentcar.cz](http://www.arentcar.cz).**  
**Opening Hours: Mon–Sun 07:00–19:00**

## JS-car

Vehicles, mainly Skoda cars, are available for rent. Unlimited mileage is given on all rentals. 30% is added onto the rental fee for one-day rentals. Special offers for certain cars are provided for customers.

**Rate: 560–2100 CZK/day.**  
**Psohlavců 1360, Prague 4,**  
**Phone: 602 216 415,**  
**[www.iautopujcovna.cz](http://www.iautopujcovna.cz)**  
**Opening Hours: Mon–Sun 08:30–17:00**

## OneTwoGo

Exclusive cars, no older than a few years, are at your disposition. OneTwoGo offer the possibility to use their service only for airport transfers “airport-hotel-airport”. Discounts are given for longer periods rentals. Car delivery and pick-up is free of charge. Delivery in Prague within 60 minutes is guaranteed.

**Rate: 690–6500 CZK/day**  
**Karlovo náměstí 10, Prague 2**  
**Phone: 773 116 716**  
**[www.autopujcovnavpraze.cz](http://www.autopujcovnavpraze.cz).**  
**Opening Hours: 24-hour telephone line**

## Dvořák Rent a Car

Dvořák Rent a Car roster also features a limousine service. The branch is conveniently located directly at Prague’s Ruzyne airport. Car reservations and rentals are provided in 6000 destinations around the world.

**Rate: 2500–5890 CZK/day**  
**Revoluční 25, Prague 1**  
**Phone: 224 826 260,**  
**[www.dvorakrentacar.cz](http://www.dvorakrentacar.cz).**

## Avis

Approximately 5000 vehicles are at your disposal. The selection is conveniently divided according to the category of vehicles. Avis offers to arrange returning the car to other European countries than the Czech Republic.

**Rate: 35–132 Euro/day**  
**Klimentská 46, Prague 1,**  
**Phone: 221 851 225, [www.avis.cz](http://www.avis.cz)**  
**Opening Hours: Mon–Fri 08:00–16:30**

## Pražská informační služba

The Prague Information Service is a network of information centers in Prague. It offers tourist information and services. The branches located in the centre offer GPS rental. Service is available in English only.

**Rytířská 31, Prague 1, [www.praguewelcomes.cz](http://www.praguewelcomes.cz), Opening Hours: Mon–Sat 09:00–19:00.**

**Staroměstské nám. 1, Prague 1, [www.praguewelcomes.cz](http://www.praguewelcomes.cz), Opening Hours: Mon–Sat 09:00–20:00, Sun 10:00–19:00**

**Mostecká tower, Prague 1, [www.praguewelcomes.cz](http://www.praguewelcomes.cz), Opening Hours: Mon–Sun 10:00–18:00**

# RENT-A-CAR

## RUNWELL

- > New cars with A/T, M/T
- > Office and the parking place in the center of Prague
- > All included
- > Season discounts up to 15%
- > Online reservation discounts
- > Free GPS
- > Wi-Fi on the board
- > 24/7 emergency service in English, Russian, Czech languages

WEEKEND TARIFF

Czech DINNER  
for free\*

+ 420 728 500 100

[www.runwellrentacar.com](http://www.runwellrentacar.com)  
[facebook.com/runwellrentacar](https://facebook.com/runwellrentacar)

\* Rent a car in Prague for more than 4 days

## ticket sales

### Ticketpro

**Prague Tourist Center – Rytířská 404/12, Prague 1. Opening Hours: Mon–Fri 09:00–19:00, Sat–Sun 12:00–19:00**

**Ticketpro Rokoko – Václavské náměstí 38, Prague 1. Opening Hours: Mon–Fri 11:00–19:00**

**Pražská informační služba – Rytířská 31, Prague 1. Opening Hours: Mon–Sat 09:00–19:00 – Staroměstská radnice, Prague 1. Opening Hours: Mon–Sat 09:00–20:00, Sun 10:00–19:00**

**Bohemia Ticket – Na Příkopě 856/16, Prague 1. Opening Hours: Mon–Fri 10:00–19:00, Sat 10:00–17:00, Sun 10:00–15:00. [www.ticketpro.cz](http://www.ticketpro.cz).**

### Ticketportal

**Via Musica – Malostranské náměstí 13, Prague 1. Opening Hours: Mon–Sun 10:30–18:00**

**Lucerna music Bar – Vodičkova 36, Prague 1. Opening Hours: Mon–Fri 10:00–13:00; 14:00–18:00**

**Divadlo Hybernia – Náměstí Republiky 4, Prague 1. Opening Hours: Mon–Sat 11:00–19:00**

**Roxy – Dlouhá 33, Prague 1. Opening Hours: Mon–Fri 10:00–18:00. [www.ticketportal.cz](http://www.ticketportal.cz).**



## taxis

### Cedaz Praha

Public shuttle bus from airport to the centre of Prague or back. Comfortable and direct transport from V Celnici street. Tickets can be bought directly from the driver.

**Phone: +420 220 116 758**  
**www.cedaz.cz**

### Taxi Praha

Taxi Praha offer the possibility of calling a taxi on-line. The fare can be calculated on the website. Trips are monitored by GPS for the customer's safety. Rate: without dispatcher 28 CZK/km in Prague, via dispatcher 24 CZK/km in Prague. **Vrchlického 9, Prague 5, Phone: 222 111 000, www.taxi-praha.cz**

### AAA Taxi

The customers are offered individual way of transport, which provides privacy, comfort and safety. AAA Taxi belongs to the cheapest ones in whole Prague. Rate: from 14.90 CZK/km in Prague, **Phone: +420 222 333 222, www.aataxi.cz**

### Speed Cars

In spite of being a relatively new company on the market, Speed Cars have sparked great interest among customers. They provide an online fare calculator, as well as car pick-up. Rate: 19 CZK/km in Prague.

**Pacholíkova 4, Prague 2, Phone: 224 234 234, www.speedcars.cz**

# PRAGUE TAXI SERVICE



TERMINAL 2



**Call our cheapest taxi in Prague. Price CZK 14,90 / km**

Prague taxi service with more than 22 years of transportation experience in Prague, the Czech Republic, and Europe

+420 222 333 222 +420 729 33 11 33

Watch how we fetch you. Download an app to a phone that runs on Android and order a taxi for a reasonable price.

**Nonstop service • We speak English**  
**Free pickup service in Prague**  
**Approximate price calculation**  
**More than 1200 cars available**  
**Credit cards welcome**  
[www.aataxi.cz](http://www.aataxi.cz)



**REGULAR SHUTTLE BUS • AIRPORT ↔ CITY CENTRE**



**COMFORTABLE AND DIRECT  
TRANSPORT FROM PRAGUE AIRPORT  
TO THE CITY CENTRE OR BACK**

**Airport bus stop – Arrival Terminals  
T1 exit F or T2 exit E**

**Bus stop – CITY CENTRE  
V CELNICI Street**

**•NEXT TO METRO LINE B•  
• 40 METRES FROM NAMĚSTÍ REPUBLIKY•**

**TICKETS CAN BE BOUGHT  
DIRECTLY FROM THE DRIVER**

[www.cedaz.cz](http://www.cedaz.cz)



2 MY WAY

5 GALERIE MIRO

7 SIMIX

9 CITY GALLERY  
PRAGUE

11 FASHION  
THERAPY

17 GO-KART

21 ELTON JOHN

27 SHOOPS  
GRANÁT

29 GROWCITY

37 HOTEL  
CONSTANS

41 BARANICKA  
RYCHTA

45 RODEO

47 KOGO

50 CRYSTAL

53 KONEC KONCU

55 SUSHI SASORI

59 RELAX  
MASSAGES

60 MASAGE XX

63 RELAX CLUB K5

Fantasy

67 AAA CLUB

68 HARLEY'S  
MUSIC BAR



PAGE  
NUMBER 3





3

4

55

29

LETNA

17

7

68

8

21

OLD TOWN

27

55

2

47

11

12

NEW TOWN

45

53

63

67

KARLOVO NÁM

60

15

7

16

HAVELKOVY SADY

## HOTEL TIPS

# Sleeping Beauty

**G**ood sleep is the basic. Specifies the energy for the next day, the quality of work performance, mood, it is a driving motor. And it is important to know how this "obligation" to use perfectly as a third of life you spend sleeping. It is the same with the holiday.

If you really want to enjoy the relax, you need the best sleep comfort. Prague offers countless places where you can lay your head well.

Therefore, we bring you an exclusive hotel tips, which you definitely will not regret. Excellent service is guaranteed, you will sleep like you have never slept before. It's guaran-

teed by five out of five Sleeping Beauties. We wish you a pleasant time spent and enjoy the city. It is worth it!

*th*



PLAZA ALTA HOTEL



Plaza Alta Hotel & Eco-Friendly Hotel



A unique combination of comfort and affordability / 87 comfortable and fully air-conditioned rooms / Mexican Restaurant 7 Tacos Steak & Grill / Meeting room / Fitness room / Free Wi-Fi / 10 min. to the centre of Prague / 5 min. to the Holešovice Fairground



Ortenovo nám. 22, Prague 7, Czech Republic, +420 220 407 011, [booking@plazahotelalta.com](mailto:booking@plazahotelalta.com)

[www.plazahotelalta.com](http://www.plazahotelalta.com)



Aristo restaurant premises are sensitively set into the original ground floor spaces of building from the 16th century. The restaurant is divided into several parts, from glass conservatories to rooms with joist ceilings.



*Team of chefs prepare daily a variety of dishes, that you can enjoy traditional specialities of Czech cuisine in new and modern concept, often accompanied by a seasonal specials menu.*

#### **Opening hours:**

The restaurant is open every day  
7:30 a. m. to 10:00 p. m.

7:30 a. m. to 10:30 a. m. Breakfast

11:30 a. m. to 2:30 p. m. Lunch menu

11:30 a. m. to 10:00 p. m. ala carte menu

#### **Contact:**

TEL: +420 234 091 818, 234 091 863,

FAX: +420 234 091 860

e-mail: [provoz@hotelconstans.cz](mailto:provoz@hotelconstans.cz)

[www.hotelconstans.cz](http://www.hotelconstans.cz)

Hotel Constans – restaurant Aristo

Břetislavova 309/18

118 00 Praha 1 - Malá Strana

GPS : 50°5'15.174"N,

14°23'58.011"E

**10% DISCOUNT**  
WITH THIS MAGAZINE



## WHEN GOLD FLOWS

**T**he Czechs are justly proud of their beer and won't hear a bad word said against its unique taste. Because of this fact, no foreign company in the world is of such a high repute as our companies. Although the Czech producers have recently began to experiment with flavored alternatives that have so much in common with the real beer as do sausages with meat, this is, however, only a small taint of the Czech beer.

The key is that the Czech beer had, has and will have a unique taste. Therefore, we dedicate a small special issue to it.

*ml.*



### JOHN LENNON PUB

Hroznová 495/6, Prague 1  
Phone: +420 257 214 266  
[www.johnlennonpub.cz](http://www.johnlennonpub.cz)

Whether you love John Lennon's classic music, delicious beer or a good meal, the newly opened John Lennon Pub is the right place for you. It's a pub where you'll only hear the Beatles, with posters of Lennon on the walls and an original red telephone booth adding to the atmosphere. Out chef's specialty is baked smoked knee on black beer and of course Pillsner Urquell. The „golden drink“ is represented by Gambrinus, black Kozel and non-alcoholic Birrell.



### BARÁČNICKÁ RYCHTA

Tržiště 23/555, Prague 1 – Malá strana,  
Phone: +420 257 532 461  
[www.baracnickarychta.cz](http://www.baracnickarychta.cz)

**M6**



If you're looking for somewhere to experience true Czech style with a slightly nostalgic and, above all, relaxed atmosphere, you can consider Baráčnická rychta a frontrunner in this quest. The word „Baráčník“ - „Cottager“ references a man, who's religion is the restoration of Czech traditions, customs and lore. Baráčnická rychta thus focuses on traditional Czech cuisine, with the utmost care and a rich selection (Pilsner, Svijany, Baráčnický Tuplák, Rohozec) of beer, that packs a punch. All this in an original environment with friendly prices.



## U PIVRNCE



Maiselova 3, Prague 1  
Phone: +420 222 329 404  
Email: [upivrnce@upivrnce.cz](mailto:upivrnce@upivrnce.cz)  
[www.upivrnce.cz](http://www.upivrnce.cz)

Not far from the Old Town Square, in one of the inconspicuous streets, there is hidden a pub called U Pivrnce. In the area full of luxurious cafés and overpriced restaurants, it is one of the best examples that the “real Czech boozers” still exist. The pub is

## BEER SPECIAL

three-storeyed, offers 120 seats and the fact that the walls are decorated with big paintings by Petr Urban, a famous Czech caricaturist, captures everyone's attention right after entering the pub. The prices are given the location quite affordable, and the typical Czech cuisine is cooked here – to name but a few: knuckle of pork, dumplings with bacon, potato pancakes, meat from a cooked pig's head with horseradish and a whole range of other delicacies.

Since we are in a pub, we cannot miss the main ingredient – a gold-coloured refreshing delicious beverage. You have a great choice here as well. U Pivrnce, you can choose from Pilsner Urquell, Gambrinus and Kozel (10°, 11° and dark) – something for everyone.

If you want to experience the atmosphere of a real Czech pub, U Pivrnce is a place you cannot forget to visit.

# NOVOMĚSTSKÝ PIVOVAR

## THE NEW TOWN BREWERY RESTAURANT



- We brew our own 11° lager
- Typical Czech cuisine
- Beer parties with live music
- A tour of the brewery
- 400 seats in a stylish interior

Novoměstský pivovar  
Vodičkova 20, 110 00 Praha 1  
Rezervace: (+420) 602 459 216  
[sales@npivovar.cz](mailto:sales@npivovar.cz)



OPEN DAILY

[www.npivovar.cz](http://www.npivovar.cz)

**1 FREE BEER !!!**  
• Offer valid with order of any main meal from the menu



## NOVOMĚSTSKÝ PIVOVAR

Vodičkova 20, Prague 1  
Phone: +420 222 232 448, 222 231 662  
[www.npivovar.cz](http://www.npivovar.cz)



The restaurant brewery in the Prague center can boast its own production of 11 degree beer - wheat, non-filtered, light and dark lager. Beer in the Novoměstský brewery, this year celebrating its 20th year anniversary, is brewed exclusively from Czech ingredients. Regarding food, you can choose from traditional Czech and international cuisine. The attractive premises offer 400 places, beer evenings with live music and for the real curious, there is a guided tour of the brewery.



## IRISH PUB O'BRIEN

Janovského 36, Prague 7  
Phone: +420 283 923 195  
[www.pubobrien.cz](http://www.pubobrien.cz)

Seasoned pub patrons, pay attention! Duplex Irish restaurant O'Brien in Holešovice is a place that shouldn't escape your experienced sight. After entry, you can pick either of two variants: staying on the upper deck, you find yourself in a traditional Irish pub, where you shouldn't speak ill of green sprites, or if you venture below decks, you enter the environment of captain Hook's pirate ship. On both decks, the direction isn't set by the ship compass, but by a classical beer tap. According to your taste, there are several directions you can take: On the menu you can find Guinness, Hoegaarden, Pilsner, Stropamen, Celtic Velvet or Stella.

## THE PUB

Křížkova 28, Prague 8  
Phone: +420 222 286 013  
[www.thepub.cz](http://www.thepub.cz)

Nothing can spoil the impression from a visit to some establishment like slow service. You hate waiting? The you will love The Pub. Here, each customer has his own tap! This of course doesn't mean that there is no service. But regarding beer, each table has a tap and you yourself decide how fast you will drink. And to provide you with proper motivation, you can see the ongoing numbers from tables of all The Pub's branches around the whole republic. At the table you can pour yourself Pilsner Urquell, or the service can provide you with either 11° Gambrinus, a dark Kozel 10° and newly Fénix.





# Baráčnícká rychta

restaurace



A real Czech restaurant with a slightly nostalgic and relaxing atmosphere, delicious Czech cuisine and Czech beer genuine as Svijany and Pilsner beer.



Tržiště 23, Prague 1 – Malá Strana.

Tel.: +420 257 532 461

[www.baracnickarychta.cz](http://www.baracnickarychta.cz)

Open hours:

Mon - Sat: 11am - 23pm

Sunday: 11am - 21pm

10% Discount  
with this magazine



## ÚNĚTICKÝ PIVOVAR

The Únětice brewery was founded in 1710. However, beer has been brewed here by the local canons since the middle of the 16th century and the brewery itself was for centuries owned by the Metropolitan canonry of St. Vitus in Prague. Today in Únětice, we brew the "10°", "12°" and sometimes also the special.

Únětice brewery restaurant

The best way to experience the beneficial effects of the Únětice beer of excellent quality is in our restaurant in the Únětice brewery. We invite you for the Czech meals of chef Lukáš Nechyba and brew master Vladimír Černohorský's Czech tank beer from the lager cellar of the brewery.



### Restaurant in Uneticky pivovar

Phone: +420 220 515 687

Rýznerova 19

252 62 Únětice

[www.unetickypivovar.cz](http://www.unetickypivovar.cz)

Restaurant opening hours:  
daily 11.00-22.00

(15 minutes by car from Prague city center)



# WAREHOUSE #1

Destiláty | Triple "A" vína | Doutníky



Warehouse #1, Sokolovská 105, Praha 8 – Karlín (naproti hotelu Ibis), [www.warehouse1.cz](http://www.warehouse1.cz), tel.: 608 520 526  
otevřeno: pondělí – pátek 11:00 – 19:00



## KANTÝNA WINE & RESTAURANT **M7**

Dům U závoje, Havelská 25  
Praha 1, Phone: +420 226 006 122  
[www.kantynauzavoje.cz](http://www.kantynauzavoje.cz)

Situated in „U závoje“ house Kantýna wine & restaurant for lovers of good food has prepared a concept of Czech cuisine combined with a large selection of international specialties. We understand the importance of food quality for all of us as well as trends of modern gastronomy. That's why we believe in simplicity. We try to make our sauces more light and add vegetables to every meal. We emphasize on home-made dishes without any chemical flavorings. We use only the best and always fresh ingredients.



## KOGO **M7**

Havelská 499/27, Praha 1, Phone:  
+420 224 210 259, [www.kogo.cz](http://www.kogo.cz)

Magical atmosphere of the Old Town, flexous streets and passages. Here, in the shadow of grand church of st. Havel, is located restaurant Kogo Havelská. The restaurant offers some of the best gastronomic experience, delivering excellent Italian cuisine with Mediterranean flavors. It is based on high quality fresh ingredients imported directly from Italy, seasonal ingredients, homemade pasta, homemade desserts and bread. Summer garden is open from April to October.



## U DĚDKA **M16**

Na Kozačce 12, Prague 2  
Phone: +420 222 522 784  
[www.udedka.cz](http://www.udedka.cz)  
Price: Porkribsroasted in marinadewi-  
thfreshvegetables 155Kč

This restaurant is located on the border of two Prague's quarters called Vinohrady and Vršovice. The restaurant offers 120 seats and rugged interior, which is certainly an advantage. Whether you'll be ordering ribs, with cheese and bacon or anything else, cooks will definitely surprise You with the iringenuity and greats kills. You'll certainly enjoy having dinner or lunch here. There are Pilsner Urquell and Velkopopovický kozel (light and black) for beer lovers here as well.



## KONEC KONCŮ

Římská 45, Prague 2 , Vinohrady  
Phone: +420 222 544 803  
[www.koneckoncu.net](http://www.koneckoncu.net)

A typical Czech family run restaurant with Pilsner beer and nice service on which is based customer's satisfaction. Our new seasonal menu for your sweet tooth prepared by our new team of chefs headed by the chief chef Petr Sládek is going to be ready for you since November 3. We have open a music bar for you on weekends with a capacity of 400 people. Our restaurant and club offers excellent facilities for corporate Christmas parties or other kind of parties. Our team look forward to your visit!



# RODEO

MUSIC & COCKTAIL BAR



JEČNÁ 12/509, PRAHA, NOVÉ MĚSTO



## DYNAMO

**M7**

Pštrossova 220/29, Prague 1  
 Phone: +420 224 932 020  
[www.dynamorestaurace.cz](http://www.dynamorestaurace.cz)  
 Price: Lunch from 95 CZK

If you are in the center of Prague and give on a nice impression, visit the restaurant Dynamo. In 1999 the restaurant was awarded for its interior design, created by Olgoj Chorchoj and Ales Najbrt. Currently it has been changed by the fa Lavmi Babette Ondrová. The restaurant offers specialties of European cuisine and believe us, you will enjoy it. You can also be surprised by a large selection of wines from Moravia and all over the world. Enjoy your meal and have a great experience!



## VESELÝ BIZON

**M14**

Štefánikova 44, P-5  
 Phone: +420 257 318 894  
[www.veselybizon.cz](http://www.veselybizon.cz)  
 Price: ostrich steak 200gr/ 245CZK

Pleasant and comfortable interior offers this steak restaurant situated in Smíchov. Besides steaks there are a lot of grilled specialties served. New feature is the ostrich steak delivered fresh from the farm Studánka, which you should taste when you visit the restaurant. You will maybe be amused because names of dishes are chosen at least unusually, such as "Donald's seconds" – steak made from duck breasts with cranberries sounds really promising.



## CHAPADLO

**M15**

Nuselská 44, Prague 4  
 Phone: +420 241 404 337  
[www.chapadlo.com](http://www.chapadlo.com)

The restaurant Chapadlo in Nusle features a complex modern concept. Modern gastronomy goes hand by hand with well-sophisticated interior with clean lines and natural elements. Here are special offers of food prepared every month. You can find there even a 400g steaks. You can also use the offer of lunch menu. Drink arsenal is filled with a wide offer of beers from Pilsner brewery and wines from the whole world.



## GEORGE AND DRAGON

**M7**

Staroměstské náměstí 11  
 Phone: +420 222 326 137  
[www.georgeanddragonprague.com](http://www.georgeanddragonprague.com)

George and Dragon was founded in September 2003. Since then this bar became very popular between both foreign and local visitors. Many of them appreciate English-speaking staff, live music and a wide variety of drinks you won't find anywhere else in Prague - for example Heineken, Stella, Guinness, Edelweiss, London gold, Magners, Strongbow, Kopparberg and lots more. The menu contains traditional English breakfast, Steak pie, Shepherd's pie, Fiserhman's pie, chicken or beef burger, Traditional Fish and Chips and other famous English recipes. You can also choose from several salads. George & Dragon is looking forward to your visit.



10% discount  
with this mag



**kantýna**  
wine & restaurant

Havelská 25, Praha 1

+420 226 006 122

info@kantynauzavoje.cz

www.kantynauzavoje.cz

For the Food & Wine Lovers

Traditional Czech specialities in a modern conception  
as well as international cuisine



**KOGO**

ristorante



**Specials of Italian Cuisine  
with Mediterranean flavor**

Cuisine based on  
fresh and seasonal ingredients,  
home-made pasta fresca,  
desserts  
and typical home-made bread

Havelská 27, 110 00 Praha 1 [www.kogo.cz](http://www.kogo.cz)

tel.: +420 224 210 259 email: [havelska@kogo.cz](mailto:havelska@kogo.cz)

**50,-czk DISCOUNT FOR EACH PIZZA WITH THIS MAGAZINE**

## TEA/CAFE TIPS



### CAFE LOUNG

Plaská 615/8, Prague 5  
Phone: +420 257 404 020, 733 182 208  
[www.cafe-lounge.cz](http://www.cafe-lounge.cz)

Voted best cafe in the 2010 Czech Bar Awards, this Malá Strana spot is the height of sophistication. Whether you are stopping by for a delicious breakfast, afternoon coffee or evening glass of wine, you will enjoy elegant surroundings and tasty treats. The café's terrace shares a boundary with the historic Hunger Wall, so in the summer stop by for a private moment. The chef Michal Skuhrovec is working with seasonal ingredients and will love to show his skills to you, same as the pastry-cook Magdalenka, since all the sweets are made in-house. The café serves freshly roasted coffees, either blended or single origin.



### CAFFE PER LEI

**M7**

Karlova 154/17 Prague 1  
Opening hours: 10-22h

This famous café is located in the heart of old Prague center on the royal route. You can be pleased by stylish and comfortable interior, excellent international cuisine, delicious cakes and excellent Italian coffee brand Tonino Lamborghini. For your convenience you can find also Wi-Fi connection. We confirm the excellent and courteous service.



### DOBRÁ ČAJOVNA

Wenceslas Square 14, Prague 1  
[www.tea.cz](http://www.tea.cz)

**M11**

Dobrá čajovna located in the lower part of Wenceslas Square, was opened on June 1st, 1993 as the first teahouse in Czech Republic and in the post-revolutionary period immediately attracted attention to itself. During the following years, Czech Republic became a country with the biggest concentration of tea shops in the world. Visit the unique space of this Mother of Tea-rooms, the place where it all started and in a pleasant environment do try some of the finest tea that has directly arrived from all the four corners of the tea world.



### CAFE SLAVIA

**M10**

Smetanovo nábřeží 1012/2, P-1,  
Phone: +420 224 218 493  
[www.cafeslavia.cz](http://www.cafeslavia.cz)

Open times: mo - fr: 8:00 - 24:00, sa - su: 9:00 - 24:00, Price: ice coffee with ice cream and whipped cream 65 CZK

Pearl of the cafes is definitely a café Slavia, directly from the table you can admire the beauty of Charles Bridge, Prague Castle and National Theatre while enjoying an iced coffee or a glass of excellent wine. You can enjoy a professional pianist who performs everyday between 17:00 and 23:00. Finally don't forget to praise excellent service.



# 桜 SAKURA

SAKURA RESTAURANT  
SUSHI BAR • JAPANESE CUISINE  
ORIENTAL FOODFARE

Přijďte si pochutnat nejen na skvělém SUSHI ...

**PRAHA 1**  
**ČERNÁ RŮŽE**

Na příkopě 12  
☎ 775 725 872



TRADIČNÍ I NETRADIČNÍ SUSHI  
A JINÉ ASIJSKÉ SPECIALITY

[www.sakuracr.cz](http://www.sakuracr.cz)

# pizzeria KMOTRA

LUNCH MENU 115-150 Kč

Pizzeria Kmotra

If you want a really good pizza prepared from high-quality ingredients or fresh home-made pasta, Pizzeria Kmotra is the right choice for you. This pizzeria is proud of its reputation because it's the oldest pizzeria in Prague and from its earliest days it has emphasized both the quality and freshness of the ingredients used and the reasonable prices. The restaurant has separate areas for smokers and non-smokers and a private room for 35 guests. There are ISIC card-holder discounts and home-delivery is also available (see our website for current offers). As well as beer and spirits, you can choose traditional Italian wines or selected quality Czech wines.

V Jirchářích 12, Praha 1, Phone: 224 934 100, [www.kmotra.cz](http://www.kmotra.cz)





# CRYSTAL



[50] top restaurant

**A** modern design with traces of Pop art, a modest menu, taking a chance on a wide variety of drinks and cocktails and placement close to the Old Town square, where there is an abundance of bars and restaurants. The polished bar-restaurant Crystal proves that there is still a place for new businesses with healthy confidence.

Crystal appears subtle from the street. Unlike the others, it refuses to bet on quantity, but rather chooses quality. This is characterized by the very premises of the stylish establishment, which can accommodate approximately fifty persons. But on shouldn't be scared of tightness - Crystal offers an airy enough interior, so that one always feels comfortable there.

The new bar restaurant Crystal will capture attention at first sight. The environment, with a relaxed atmosphere and pleasant music (mostly soul, funky or blues, live on Thursdays), is energized by various de-

sign features (playful paintings, cozy fireplace) that will make you look around the place all the time.

Fortunately, the gastronomical part of the establishment is at least equally interesting. Namely, the dual faces of Crystal. Throughout the day, it is a full-fledged restaurant and it turns into a bar for the night. And this is not only a symbolic change. The tables are cleared, the lights dimmed and Crystal suddenly gains an entirely different (and sexy) face.

With regards to the restaurant, it would be naive to expect a menu of twenty meals. The establishment doesn't have the capacity and a cluttered menu has no place in the modern times (unless you are in a company restaurant, which is expecting a client onslaught). A more modest offering has the advantage of enabling the use of exclusively fresh ingredients. This is exactly Crystal's case. The menu is changed every three months and respects seasonal products. Head chef Lukáš Jelínek, who has experience

from a Michelin awarded French restaurant, brought an international tint to Crystal's menu, where you usually encounter several main courses, three appetizers and a few salads. Crystal restaurant bakes a different fresh bread every day, with dried tomatoes, truffles, nuts or olives and offers a large selection of homemade lemonades. The establishment thus doesn't lack a distinctive restaurant image. If you take your better half out to a romantic dinner, or a friend/business partner to a business lunch, you surely will regret nothing.

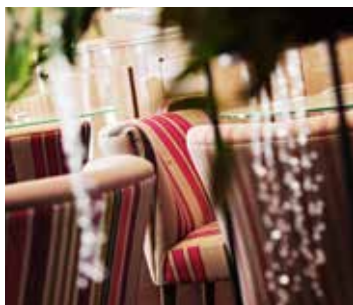
Crystal also doesn't disappoint in the field of drinks. Except for the „classical offer“ (various types of rums, whiskeys, gins etc), the establishment is dominated by excellent cocktails. Experienced bartenders are able to manage a wide variety of drinks from the well-known to those you seldom encounter elsewhere. Enthusiasts of modern bartending will surely appreciate several molecular cocktails, and attention should be paid to the smoked cocktail called Smoked Cherry Wood.

Not even the seekers of premium alcohol will come short- they can taste the extraordinary cognac Hennessy Paradis Imperial, which is one of the most prized brands in the world.

Given the placement of the establishment, the carefully crafted interior and high degree of services, you will be surprised by the very reasonable prices at Crystal. They are definitely lower than one would expect.

Bar and Restaurant Crystal is true to its name. Its polished, elegant, timeless in all aspects and it will be difficult to take your eyes off it. And, above all, it is a proof that you can still come up with a fresh and affordable establishment in the center of Prague.

th.



CRYSTAL

BAR & RESTAURANT

V kolkovně 908/7, Prague 1  
Phone: +420 607 337 337  
[www.crystal-restaurant.cz](http://www.crystal-restaurant.cz)



## EL MOJITO CAFÉ

Dlouhá 31, Prague 1  
Phone: +420 776 872 989

**M7**

El Mojito Café Prague is so unique. You would hardly find any other type of business where they can serve you more types of Mojito as the name already suggests. If you are situated in the center of Prague, in the streets around Dlouhá Street we recommend you to go to one from the 25 kinds of Mojitos. You can find there also delicious food to eat. You will be fascinated in a very cozy interior with a unique touch of coastal states.



## LOCA CAFE BAR

Smetanovo nábřeží 24  
Phone: +420 212 240 967  
www.locabar.cz

**M6**

Do you long for a pleasant stay with a view of not only the river bank, but also to Prague Castle and Charles Bridge? Delicious food, good drinks and attentive service? Then LOCA CAFE BAR is the right choice! You will enjoy this stylish new restaurant not only because of its location on the Smetana riverside but also for the interior and everything it has to offer. And is not that little!



## BARÁČNICKÁ RYCHTA

Tržiště 23/555, Prague 1  
Phone: +420 257 532 461  
www.baracnickarychta.cz

**M6**

This place has always been the meeting place of people in various cultural events such as concerts of various genres, dance nights, theater of small scenes, cabarets and much more. You would hardly find a saloon like this in Prague. It seems as if time has stopped. Its unique atmosphere and location will conquer you as well as excellent traditional Czech cuisine, delicious beer and friendly staff. If you don't select from the rich program, you can select "Baráčnická rychta" for private or corporate events. There will be always prepared for you – "With respect and a little extra pleasure!"



## NAPA BAR & GALLERY

Prokopská 8, Malá Strana, Prague 1  
Phone: +420 777 255 066  
www.napabar.cz

**M6**

Joining a bar with a gallery, not bad of an idea! If you add in occasional gigs and small concerts in the bar, it even becomes an excellent combination. This is exactly what NAPA bar is like. Simply a relaxed bar, where they will take good care of you. You can for example enjoy the unique taste of the rum Zacapa, choose from a wide variety of other intoxicating drinks or play some pool.



**A** typical Czech family run restaurant with Pilsner beer and nice service on which is based customer's satisfaction. Our new seasonal menu for your sweet tooth prepared by our new team of chefs headed by the chief chef Petr Sládek is going to be ready for you since November 3. We have open a music bar for you on weekends with a capacity of 400 people. Our restaurant and club offers excellent facilities for corporate Christmas parties or other kind of parties. Our team look forward to your visit! Facebook: Konec koncu music club - restaurant



Rímská 45  
Praha 2, Vinohrady  
Phone.: 222 544 803  
[www.koneckoncu.net](http://www.koneckoncu.net)





## BARBAR

Všehrdova 17, Prague 1 (Újezd),  
Phone: +420 257 312 246  
www.bar-bar.cz

**M6**

Bar Bar is located in Prague's Malástrana (Lesser Town), and it boasts an excellent restaurant with a wide range of vegetarian as well as meat dishes, a laid back bar with an extensive selection of drinks, and a gallery, where young artists exhibit their work. One of the more noteworthy areas of this venue is the basement, featuring a fairytale-esque interior complete with vaulted ceilings. Bar bar has a dispose of separated rooms for smokers and non-smokers.



## GANGSTER'S PARADISE

U Pallarky 7, Prague 5  
Phone: +420 777 229 822  
www.hzk.cz

**M14**

This original club & show bar is decorated in the spirit of American gangster movies. It is located in the magnificent rooms of the original gothic dungeons. The capacity is 250 visitors and 100 of them can sit. Stylish design, lounges, dance floor, long cocktail bar and themed parties like Casino, Hawaii, Pirates, Pampers night or successful Widlákof. That's LaMAFIA. It has everything what demanding client could wish for.



## SOLIDNÍ JISTOTA

Pštrossova 21, Prague 1  
Phone: +420 605 000 500,  
www.solidnijistota.cz

**M7**

A cocktail bar, a club and a steakhouse in one, Solidní nejistota has been considered a classic in Prague nightlife for a number of years now. It is a popular destination for late parties thanks to its opening hours that, during summer, begin and end when there's light outside (in winter, the place closes almost during daybreak). No wonder, since there is a lot to be had: you can dance away, you can sip on unique mixed drinks, and you can eat well – the kitchen remains open until 6AM. Solidní nejistota takes care of it all.



## XL PUB

Veselská 663, Prague 9  
Mo- Sun PM 10:00 – AM 11:00  
Phone: +420 234 002 631

**M4**

Broadcasts of sport events on eight large-scale TV screens, professional fable football (foosball) and billiard pool. Well, it is clear that we are talking about sport type bar. However classical delights of the local cuisine, such as wings in spicy sauce, ordered at your own risk, or sinful chopped pork ribs on the finger food, beef tartare in XL size and many other delicacies can not be missed. As well as Pilsner Urquell, excellent coffee, homemade lemonade, ice cream or cocktails.





# Японский ресторан и Суши-бар Сасори

Позвольте нам пригласить Вас в недавно открывшийся японский ресторан и суши-бар Сасори с выбором японских фирменных блюд и различных сортов мяса. Ресторан предлагает оригинальные японские шашлыки Кушияки, ассортимент традиционных супов и закусок, салаты, кулинарные особенности из лапши и комбинации всегда свежих суши, таких как Нигири-суши, Маки-суши, Спешл маки, Сашими и специальных сетов Суши-сашими. Также имеете выбор из свежей рыбы, креветок и мяса. Фирменным блюдом является говяжий стейк Кобэ из традиционного племени Вагю. Ресторан Сасори предлагает пёстрое меню японских вин Саке и Умешу. Ресторан Сасори находится на первом этаже отеля Belvedere со входом с улицы Milady Horákové и является полностью для некурящих. Стильно украшенные помещения вмещают 40 человек. Японский ресторан и суши-бар Сасори - это идеальное место для



каких-либо случаев. Приготовление еды начинается с тщательного выбора качественных и свежих продуктов, а хорошо обученный персонал является естественностью. Японский ресторан Сасори даёт возможность проведения общественных мероприятий, празднования дней рождения, торжественных обедов и других мероприятий.



SASORI restaurant  
MILADY HORÁKOVÉ 19  
Praha 7

tel: +420 233 321 073  
info@sasorirestaurant.cz  
www.sasorirestaurant.cz





## AMBASSADOR CASINO

Václavské nám. 5, Prague 1  
Phone: 224 19 36 81  
www.vipclub.cz, Open 24 hours **M7**

Since 1992, Casino Ambassador has been one of the best casinos in Prague. In 2002 the casino underwent reconstruction to improve and expand their services. Aside from slot machines, in Casino Ambassador you can have the chance to play "live" games at manned gaming tables such as: American roulette, Black Jack, Pontoon, and Oasis Poker. You can play with Czech Crowns or Euros right at the gaming tables, and exchange other foreign currencies at the casino's box office for casino chips. Additionally, one of the perks of VIP Club casinos is that entry is free of charge.



## CARD CASINO

Veletřzní 20, Prague 7  
Phone: 220 571 648  
www.cardcasinoprague.cz  
Open 18.00-05.00 **M3**

This casino is part of the four-star hotel Parkhotel. The original Parkhotel casino was completely reconstructed, and now offers visitors the utmost in comfort and luxury. Slot machines, gaming tables for American Roulette, and card games such as Black Jack, Pontoon, Texas Hold'em. Poker and Caribbean stud poker are all available for guests. With a minimum stake of only 25 crowns, guests can take the pressure off of playing to win, and enjoy the fun and excitement the casino has to offer.



## CASINO HENRY

Václavské nám. 45, Prague 1  
Phone: 224 225 194  
www.casinoaleks.cz  
Open 24 hours a day **M11**

In 2006, Casino Henry underwent major reconstruction, and today is one of the top ranking casinos in Prague. It is also a part of the five-star hotel Jalta. The local restaurant and bar offers a selection of Russian and Armenian dishes, as well as other international specialties. Here you can enjoy the pleasant atmosphere and top-notch service. Games available at the casino include: American Roulette, Black Jack, American Black Jack, Poker, Pontoon, Caribbean Poker, Punto Banco, and Texas Hold'em.



## CASINO PRESIDENT

Nám. Curieových 100 (President Hotel), Prague 1, Phone: 234 614 113  
www.casinopresident.cz, Open 18.00-04.00 Fri, Sat 18.00-05.00 **M11**

A casino with a longstanding tradition, located along the Vltava River, right in the middle of historical Prague. Casino President is a part of the five-star hotel President, which is located near Pařížská street along the Vltava River. The casino has been opened since 1992 and has always been among the most prestigious casinos in Prague. In a luxury environment you can choose from a broad scale of slot machines but above all from numerous tables offering live games: American Roulette, Blackjack, Ponton, Caribbean Poker or Texas Hold'em.



## BANCO CASINO

Na Příkopě 27, Prague 1, 110 00  
Phone: +420 224 267 177  
[www.banco-casino.cz](http://www.banco-casino.cz)

The building that houses Banco Casino is located on the historically significant border between the Old and New Town. The street, which is in accordance with the current rating scale in order as the 18th of the most expensive street in the world in terms of any lease areas within it. Therefore, if you are the real players here will be the right place.



## CASINO KARTAČ

Na příkopě 852/10  
Phone: +420 224 216 888  
[www.casinokartac.cz](http://www.casinokartac.cz)

The Casino is open for you 7 days a week, 24 hours a day. The minimal stakes begin at 10 CZK, so that really everybody can try their luck at the gaming machines, TouchBets, Roulette, Black Jack and different poker variants. Every day from 19 o'clock we also play Texas Hold'em, both as cash game and as tournaments. Our players have free entry and snacks.



# NAPA

bar & gallery

open from 05:00 pm till 03:00 am  
3 minutes from Charles Bridge  
a great choice of beverages  
concerts, billiards



**NAPA bar & gallery**  
**Prokopská 8, Praha 1**  
**+ 420 777 255 066**  
**[www.napabar.cz](http://www.napabar.cz)**



## SINFUL NIGHT LIFE OF PRAGUE CITY

**W**hy will be deluding ourselves. Every good capital, whose streets pulsate with life, must have beside restaurants, bars, cafes and shopping centers also (as the novelists say) the houses of love. And even Prague is no exception. But before we go into its streets, let's make a small historic revision.

It is no longer the rule that these places are for desperate individuals. Time progressed. You can forget the red neon lights, a company of doubtful quality and cheating customers. Although the movies are convincing us that the so-called night clubs are cheap sources of vice, many psychologists have the opposite view: the company struggles with excessive shame and these clubs can be the right medicine.

When was the phenomenon of night clubs or prostitution itself actually born? Well, not

for anything they say that it's the oldest profession of the world. It is probable that prostitution has evolved from religious belief and rituals which were held to celebrate the goddess of fertility in the Middle-Age. In the 19th century it was strongly developed and reached all segments of society from politics to high art (for example Vincent Van Gogh lived for years with a Flemish prostitute). Even fifty years ago, half of the prostitutes were involuntary. This should already be over. The paradox is that there were previously only 10% of prostitutes educated; now the 50% of them are college students. This is an education reform!

We know that it's not easy to find the right company in which you can feel natural and comfortable. Indeed, there are lots of them and if you had to visit them all, it would cost you the whole wealth. For this reason, we are showing few short "best of" tips in the following pages. We guarantee that you definitely won't be bored. The ride full of excitement and beautiful women is awaiting!



**NON-STOP  
RELAX ANGEL  
MASSAGES:**

**TANTRA  
RELAX  
EROTIC**

**Adress: Nádražní 21, Prague 5  
(2.Floor)**

**Phone: +420 212 246 209**

**Mobile: +420 607 023 032**

**E-mail: relax-angel@seznam.cz**

**[WWW.MASSAGE-PRAGUE.COM](http://WWW.MASSAGE-PRAGUE.COM)**

**Young masseuses.**

**Sauna, jacuzzi.**

**Erotic massage in the jacuzzi!**

**Massage beds are heated!**

**Massage with hot stones!**

**Body to body massage!**

**Prices from 40 EUR**

**Escort at hotel**





*MASSAGE XX*  
*salon of erotic massage*

☎ contact us: +420 608 900 316  
*seven days a week!*



FOR MEN



FOR WOMEN



FOR COUPLE



FOR GAY

**M**assage in Prague, erotic massage  
Do you find that your love life loses intensity that it became tedious and you are really tired of it? What about testing quality erotic massage? Surely you wake up in a good deal of excitement in you and your sex life picks up speed again. Nothing else will wake such lust, like quality erotic massage. Maximum care of our body wants everybody, so our massages are the best decision that you can do for yourself. Try out our erotic massages in Prague and you will not regret!



Massage in center Prague !

Rumunská 4

Praha 2

5 minutes from metro station „MUZEUM“

E-mail: [glamour363@gmail.com](mailto:glamour363@gmail.com)

Mobile: +420 608 900 316

# *Sladké Pusinky*



*Discrete erotic club with  
escort service*

*The most beautiful girls  
in privacy of erotic apartment*

## *Opening hours*

*Monday to Sunday*

*10:00 - 24:00*

## *Address*

*Na Smelance 4, Prague 2*

## *Contact*

*00420 775 504 575*

*sladkepusinky@gmail.com*

*www.sladkepusinky.cz*

## TIPS FOR RELAX



### ELITE MASSAGE

Resslova 1775-1, Prague 2  
Phone: +420 776 111 766  
[www.elfitemassage.eu](http://www.elfitemassage.eu)

Just behind the door of the ELITE massage salon you feel the healing power of water and earth, the mighty power of fire and air. You feel relaxing action of the sounds of quiet music and essential oils aroma. Give yourself and your loved ones the rare opportunity to briefly drop out of the hectic rhythms of the metropolitan life and experience the atmosphere of tranquility and harmony in the ELITE Erotik massage salon.



### NIGHT CLUB NEON

Balbinova 21, P-2, Phone: +420 222 250 105, [www.neonclub.cz](http://www.neonclub.cz)  
Open from 12:00 to 05:00  
Price: 1 400 CZK per hour

**M11**

Neon Club is located near the center of Prague in the street Balbinova. You will be pleased that there is no admission charge. The company is among other things, very comfortably furnished and you will meet 35 beautiful girls every day. The local prices are funny but true and even the escort service is probably the cheapest in Prague. You can visit the Neon Club just for a drink and have fun with nice girls.



### LATIMERIE

Slezská 74, Prague 3-Vinohrady  
Phone: +420 224 252 049  
[www.latimerieclub.cz](http://www.latimerieclub.cz)

**M12**

The modern and also very comfortable interior offers a chance to retreat from the hustle and bustle of the city center. Nestled away in Prague 3's quaint Vinohrady, Latimerie is a cross between a cafe and cocktail bar, interlaced with low-key dance music. It's the perfect place to chat, or just listen to music and relax. The venue is very open and spacious, interspersed with original paintings, creating a modern yet unique atmosphere. You certainly won't be bored there, especially if you visit the club during one of its extravagant events, including show-stopping transvestite shows.



### SHOW PARK STRIP BAR

Holešovická tržnice – hala 18  
Bubenské nádraží 306/13  
Prague 7 – Holešovice  
Phone: +420 733 315 025  
[www.showpark.info](http://www.showpark.info)

**M4**

If you want a little night adventure, come to the strip bar nightclub Showpark. Sexy dancers, strippers and professional DJ's will take care of your entertainment until late morning. With large spaces and cozy interior in the whole place will feel very well. Surely you and your wallet will be happy because the drinks are at unbeatable prices. Admission is free.

# Welcome to the



Restaurant

Cocktailbar

Sauna

Steambath

Massage

16 Rooms

Stripshows

and

Girls, Girls, Girls

Escort service



## Bigger – Better – Known for Quality

### The Special one in Prague

The exceptional one among Prague's clubs.

On 4 floors above the roofs of Prague everyone finds the right one - and this has been our aim from the beginning. The oasis for entertainment and relaxation in the centre of the golden city. Convince yourself that with us, the client is still the King. Rooms

16 individual rooms, 10 of them designed according to a special theme, equipped with video programs, aircondition and separate sound, which does not make the choice in any way easy. "Come as a stranger and leave as a friend" is our overall motto. K5, just a unique kind to relax.

Korunní 5, 120 00 Praha 2, nám. Miru

Tel.: +420-224 250 505, 224 250 606

email: info@k5relax.com

[www.k5relax.com](http://www.k5relax.com)

Open daily from 4.00 p.m. to 4.00 a.m.

Air Conditioned, Credit cards welcome



**WE ARE LOOKING FOR NEW GIRLS. WE GUARANTEE HIGH PAY! CALL: +420 608 984 602**



# The special one in Prague



## TIPS FOR RELAX



### LIVIA ESCORT

Phone: +420 728 675 947, 720 490 010  
[www.liviaescort.cz](http://www.liviaescort.cz)

Gentlemen, in case visiting men's night clubs isn't your cup of tea (but you'd still like to have some fun), try Livia Escort - a 24 hour service, where the ladies come to you - either straight to your home or to a one-hour hotel. Livia Escort offers much more than regular escort services. If you have a long business trip ahead of you, why not enjoy the company of one of Livia Escort's ladies? You'll see that even work can be fun. This escort guarantee absolute discretion. Each girl offers a given range of services.



### MATAHARI SALON

Krocínova 3, Prague 1  
Phone: +420 773 164 811  
[www.mataharisalon.cz](http://www.mataharisalon.cz)

The MataHari Salon invites you to experience the best erotic massage in Prague! Full-body massage using hands, breasts and the entire body. Candlelight, relaxing music in a discreet luxury apartment. Let's get started with a shower or a bath with the masseuse. Handjob with (often multiple) orgasm. Check our website for more information.



### RELAX POINT 66

Phone: +420 608 948 754  
[www.relaxpoint66.cz](http://www.relaxpoint66.cz)

Relaxation massage is a kind of massage which assumes full contact between the masseuse and the client without a direct intimate contact, only with a contact between their naked bodies. The aim of such massage is a full organism relaxation, removing energy blocks, emotional relaxation and complete health regeneration. If this is exactly what you need, simply call us. The line is operational 24 hours a day.



### MASSAGE IS NOT CHEATING

Opatovická, Prague 1, Nádražní, Prague 5. Phone: +420 777 268 405  
[www.masazneninevera.cz](http://www.masazneninevera.cz)

Enjoy an erotic massage, tantric massage, naked cleaner or a hot hair-dresser. Our discreet massage studio is located in the heart of Prague, in a calm, harmonic place. Our sensuous massages are suitable for everyone who needs to relax, switch off and recharge their energy. The salon has two branches, one in Prague 1 close to the National Theatre and one in Prague 5, Smíchovské nádraží (Smíchov railway station). Our prices are decent and we work 24/7.



SWINGERS CLUB FANTASY

# Fantasy



High-class, air-conditioned club with six rooms  
and jacuzzi at the bar.  
Maximum 50 couples

**OPENING HOURS:**

Wed 11am - 3am  
Fri 9pm - 4am  
Sat 9pm . 4am



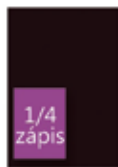
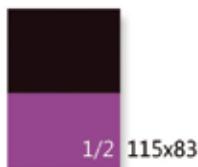
Trinecka 672 (blue F)

Prague 9 - Letnany

Tel. : (+420) 722 777 444

[www.Swingers-Fantasy.cz](http://www.Swingers-Fantasy.cz)

(entrance is located under red building next to no.673)



## Prices advertising space / 2013

### Ceny inzerce

3. obálka	60.000,- Kč
4. obálka	80.000,- Kč
1. dvoustrana	80.000,- Kč
1/1 strana	35.000,- Kč
1/2 strany	20.000,- Kč
1/3 strany	15.000,- Kč
1/4 strany	10.000,- Kč

### Příplatky:

za konkrétní umístění **15%**

### Slevy:

sleva při opakované inzerci **10-30%**  
dle počtu opakování  
sleva za 100% platbu předem **25%**  
sleva za 50% platbu předem **10%**  
**Všechny uvedené ceny jsou bez DPH (20%)**

### Storno poplatky:

30 dní před uzávěrkou **50%** ceny  
15 dní před uzávěrkou **100%** ceny

**Tisková data je nutno dodat v minimální kvalitě 300 DPI, ve formátu PDF.**  
**U rozměrů 2/1, 1/1 a 1/2 na výšku, je nutno k čistému formátu přidat 5 mm pro ořez.**

2013

Contact:  
info@bp-media.cz

	uzávěrka inzerce	datum vydání
1.	21.12. 2012	25.12. 2012
2.	22.3. 2013	25.3. 2013
3.	28.6. 2013	1.7. 2013
4.	18.10. 2013	21.10. 2013

U některých vydání může dojít k posunu v závislosti na některých důležitých akcí jež se během roku konají

# AAA Exclusive Club

Top in Prague! Free transport to the club



*Exclusive Club*

**Tel.: +420 775 077 775**

**VSTUP 200,- Kč**

**VÝBĚR SEXY DÍVEK • EROTICKÁ SHOW**

**ODVOZ do KLUBU ZDARMA od 22 HOD. + ZDARMA DRINK**

(entry 200,- CZK, free transport to the club from 22 H., free drink, topless show)

**Šrobárova 6, Praha 10-Flora**

300m od metra Flora, směr Korunní, od Flory druhá ulice doleva  
(300m from metro Flora, direction to Korunní str., 2nd street left)

Tel.: +420 775 077 775 • E-mail: [info@aaa-club.net](mailto:info@aaa-club.net) • web: [www.aaa-club.net](http://www.aaa-club.net)





**Harley's Bar presents:**

**Party You will not Forget**

**Music, that makes You Move**

**Barstaff & Drinks, that will Rock You**

**Atmosphere You will remember**

**And if You Party Well, You Will See Hell of a Bar Show!**



**Dlouhá 18, Praha 1**

**Tel. +420 602 419 111 / [harleys@harleys.cz](mailto:harleys@harleys.cz)**

**JACK**  
LIVES HERE.

